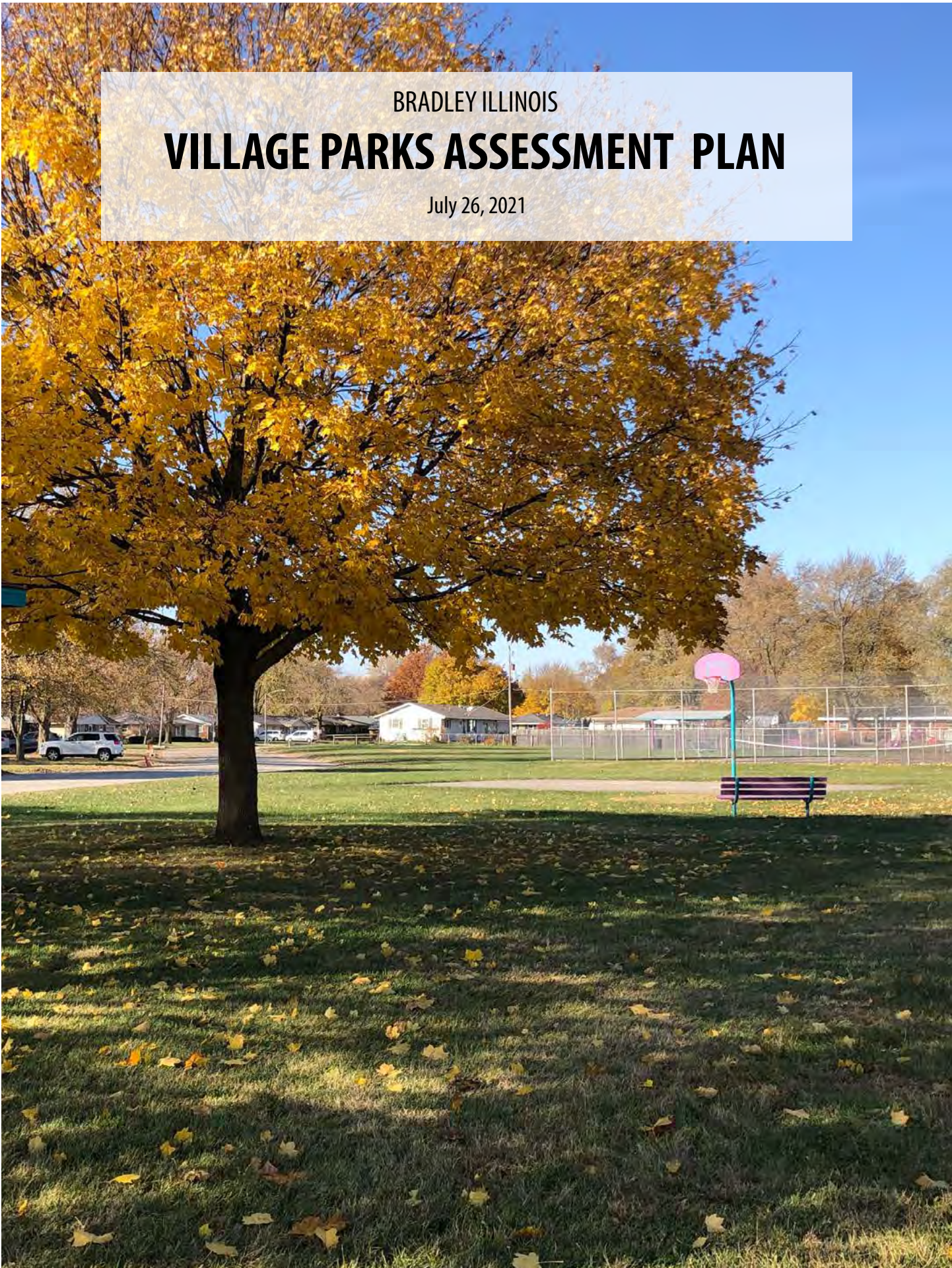


BRADLEY ILLINOIS

VILLAGE PARKS ASSESSMENT PLAN

July 26, 2021





Village of Bradley

Terry Memenga, Director, Public Works

Thank you to the Village of Bradley Parks Committee for your assistance in guiding this Parks Assessment Plan.

Michael Watson, Mayor Pro Tem
Rob Romo, Finance Director
Terry Memenga, Public Works Director
Darren Westphal, Trustee
Brian Tieri, Trustee
Bob Redmond, Trustee
Brian Billingsley, Trustee
Dennis Peters, Public Works Supervisor

Prepared by
Teska Associates
627 Grove Street
Evanston, IL 60201



Submitted July 26, 2021

TABLE OF CONTENTS

INTRODUCTION	5
PART 1 : PARKS INVENTORY AND ASSESSMENT	
❑ BLATT PARK	8
❑ CAP ESTATES PARK	10
❑ FRANKLIN PARK	12
❑ GLENN'S PARK	14
❑ HELGESON MEMORIAL PARK	16
❑ JEANETTE PARK	18
❑ JOHN'S PARK	20
❑ LEGION PARK	22
❑ LIL'S PARK	24
❑ LION'S PARK	26
❑ NEWTOWNE PARK	28
❑ NORTHFIELD PARK	30
❑ WILL PONIKVAR PARK	32
❑ QUAIL PARK	34
❑ ROBERT O. MARTIN SPORTS COMPLEX	36
❑ RUDY'S MEMORIAL PARK	38
PART 2: ELEMENTS	40
PART 3: COST ESTIMATES	44
REFERENCES	47



Legion Park

INTRODUCTION

- Project activities associated with this report include the following:
- ▶ November 5, 2020 - Site Reviews and analysis
 - ▶ Winter 2020-2021 - Staff coordination, draft report preparation and staff review
 - ▶ March 11, 2021 - Parks Committee review meeting #1
 - ▶ April 15, 2021 - Parks Committee review meeting #2
 - ▶ July 26, 2021 - Village Board Review



Playground equipment at Quail Park



Picnic shelter at Lion's Park

▶ The ADA Accessibility Guidelines are the primary basis for the evaluation of existing parks facilities and their compliance to current design standards.

- ▶ PART 1: PARK INVENTORIES AND ASSESSMENTS
- ▶ PART 2: ELEMENTS
- ▶ PART 3: COST ESTIMATES

This Parks Assessment Plan was undertaken to help guide future planning and grant application efforts for the Village of Bradley. The report provides a snapshot of existing conditions for the (16) Village-owned park facilities in Bradley. In addition to recording existing park inventories, the plan also makes general design recommendations, with associated estimated costs, for all Village-owned park facilities in Bradley.

Bradley is located in Kankakee County. Over 40 acres of parkland serve this Village of approximately 15,314 people. Park sites range in scale from quarter acre neighborhood playlots to the sprawling 15 acre Lil's Park. A majority of parks in the Village feature playground equipment. Other amenities include baseball fields, picnic shelters, a walking track, tennis courts, and access to the Kankakee River. The Public Works department is responsible for park maintenance and operations.

On-site inventories were conducted by Teska Associates landscape architects on November 05, 2020. The purpose of this field work was to inventory and record existing park facility conditions, such as structures and topographical features, traffic and pedestrian circulation, perimeter conditions, and other surrounding influences within each park site. Parks conditions were reviewed and evaluated for their conformance to current access and design standards as delineated by the Americans with Disabilities Act (ADA) and the ADA Accessibility Guidelines for Buildings and Facilities (ADAAG). The ADA Accessibility Guidelines for Buildings and Facilities (ADAAG) as published by the U.S. Architectural and Transportation Barriers Compliance Board is the primary basis for evaluating existing parks facilities and their compliance to current design standards. The inventory includes the general locations, materials, and conditions of existing parks facilities. To-scale base maps were created for each park using a combination of GIS data and aerial photography.

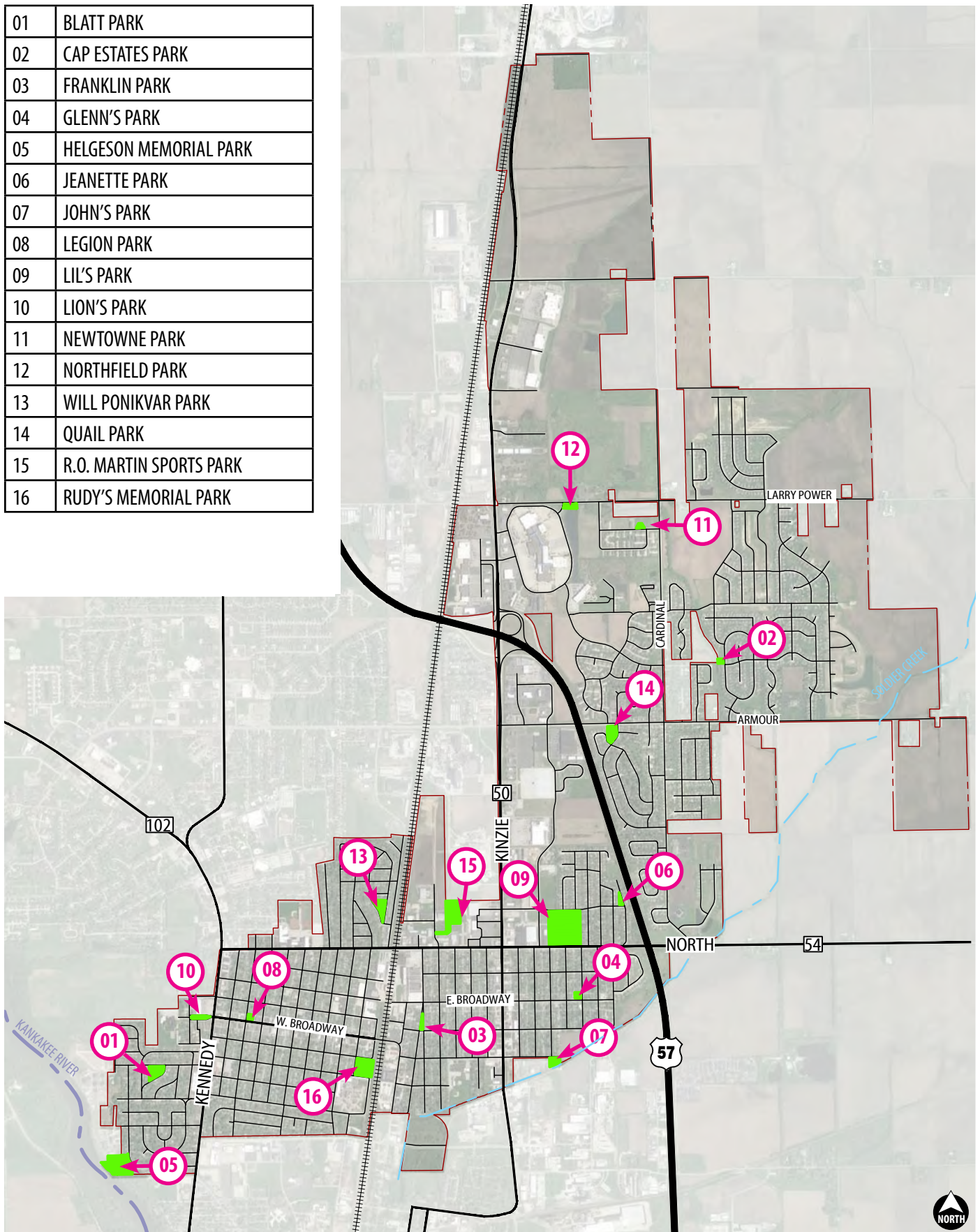
This Assessment Plan illustrates existing facilities and their status of compliance to current design standards. Recommendations address specific safety, accessibility, and circulation issues and identify possible improvements that can be made in order for parks to meet the design standards. The plan is organized in 3 parts. Part 1 illustrates each park with a map, inventory list and site photos, and lists specific accessibility issues and recommendations for each individual park. Part 2 provides additional information for accessibility and park element issues that recur across various Village parks. Cost estimates for accessibility improvements are provided in Part 3.



View of the Kankakee River at Helgeson Memorial Park

PART 1: PARK INVENTORIES AND ASSESSMENTS

01	BLATT PARK
02	CAP ESTATES PARK
03	FRANKLIN PARK
04	GLENN'S PARK
05	HELGESON MEMORIAL PARK
06	JEANETTE PARK
07	JOHN'S PARK
08	LEGION PARK
09	LIL'S PARK
10	LION'S PARK
11	NEWTOWNE PARK
12	NORTHFIELD PARK
13	WILL PONIKVAR PARK
14	QUAIL PARK
15	R.O. MARTIN SPORTS PARK
16	RUDY'S MEMORIAL PARK

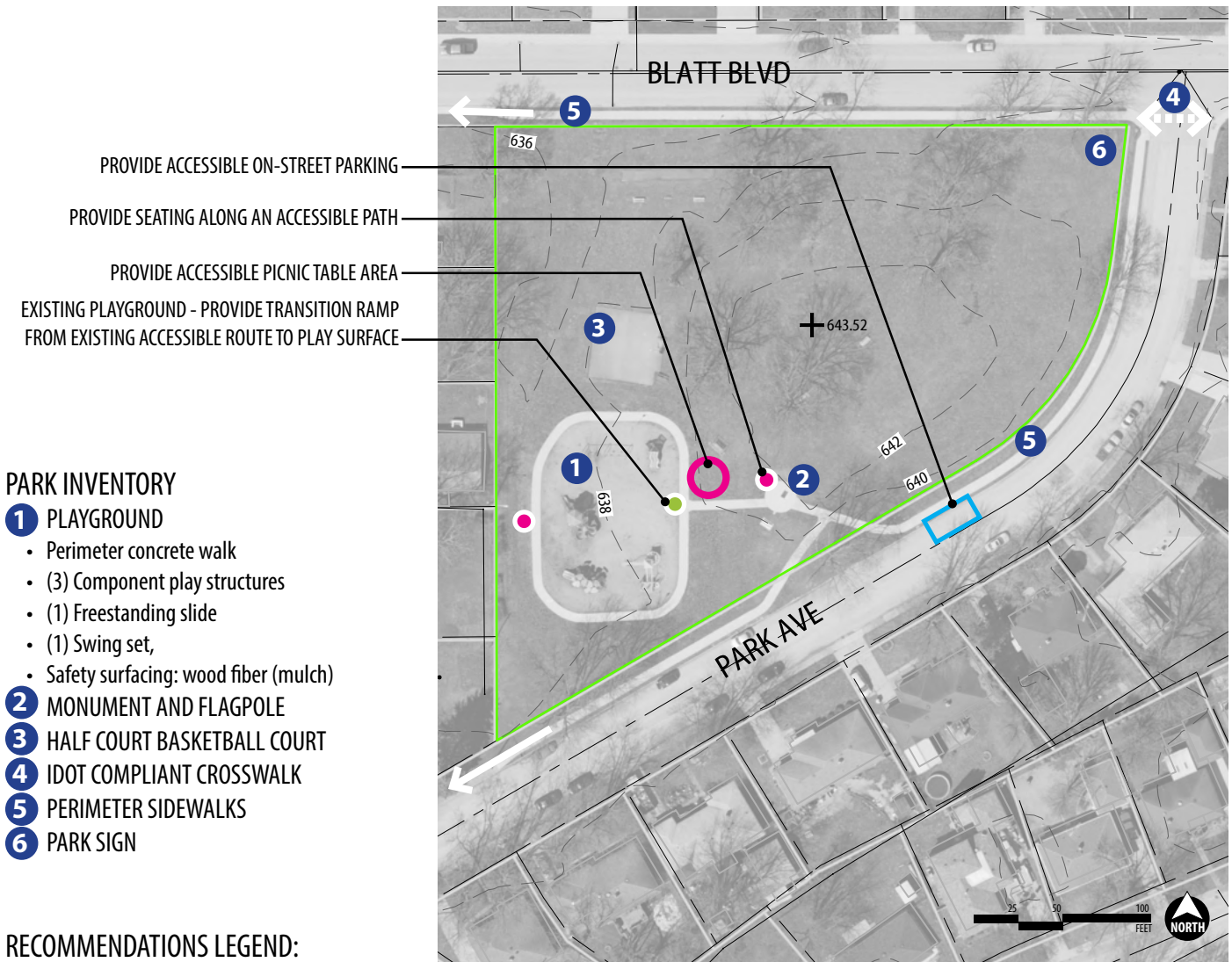


01 BLATT PARK

Blatt Blvd. and Park Ave.

PARK DESCRIPTION

(2) Acre neighborhood park featuring a playground, memorial monument, half-court basketball and open lawn areas.



PARK INVENTORY

- 1** PLAYGROUND
 - Perimeter concrete walk
 - (3) Component play structures
 - (1) Freestanding slide
 - (1) Swing set,
 - Safety surfacing: wood fiber (mulch)
- 2** MONUMENT AND FLAGPOLE
- 3** HALF COURT BASKETBALL COURT
- 4** IDOT COMPLIANT CROSSWALK
- 5** PERIMETER SIDEWALKS
- 6** PARK SIGN

RECOMMENDATIONS LEGEND:

- PLAY SURFACE TRANSITION RAMP
- HANDICAP ACCESSIBLE ON-STREET PARKING
- ACCESSIBLE PICNIC TABLE AREA
- SEATING ALONG ACCESSIBLE PATH



Black and White elevated component play structure has exposed and rusting fasteners



Ground Play Components: Swings and Freestanding Slide



Vanmeter Cemetery Memorial



Park seating is aluminum benches with dedication plaques



Playground includes 3 separate elevated component structures



Purple and Blue elevated component play structure.

Assessment and Notes:

Park:

- Park Access: Blatt Park is connected to the neighborhood side-walk network with IDOT compliant curb ramps
- Seating:
 - ▶ Recommendation to provide park benches along an accessible route.
- Picnic Tables: Park has 2 picnic tables freestanding in lawn areas.
 - ▶ Provide (1) accessible picnic area with ADA picnic table on concrete pad, connected by an accessible route.
- Signage: Proper signage is not posted for the blind.
 - ▶ Recommendation: provide braille signage
- Parking: on-street parking is available.
 - ▶ Recommendation: provide (1) accessible parking spot with accessible route to park amenities.

Playground:

- Playground Access: no accessible route to enter play area.
 - ▶ Provide transition ramps from the concrete perimeter walkway to the mulch play surface.
- Playground safety information signage not present.
- Accessible play features: This playground appears to have been recently reconstructed, at that time the ADA requirements for minimum quantity and types for ground accessible play elements would have applied. There should be (1) additional ground level play event to meet code requirements.
- Black and white component structure has exposed and rusting fasteners that pose safety risk.
 - ▶ Recommend to remove this component structure and provide another ground level play element, such as a stand alone spinner or climber.

GUIDE NOTE: All Recommendations listed under the triangle bullets (▶) are included in Part 3 Cost Estimates.

02 CAP ESTATES PARK

West Cap Cir. and Surry Dr.

PARK DESCRIPTION

(0.33) Acre neighborhood pocket park with playground and picnic shelter. Stream runs through the back of the site. Adjacent open space is a drainage basin.



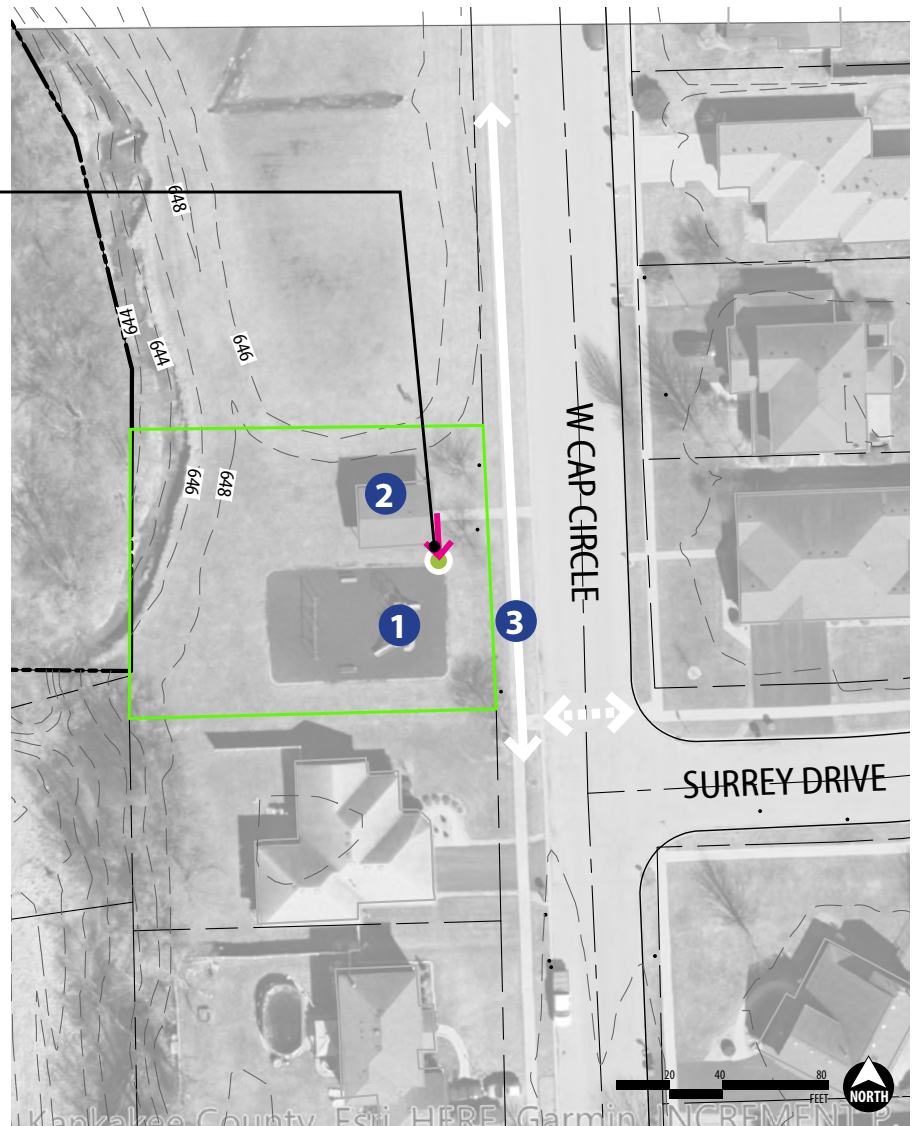
PROVIDE ACCESSIBLE ROUTE TO PLAYGROUND.
PROVIDE TRANSITION RAMP FROM PATH TO PLAY SURFACE

PARK INVENTORY

- 1 PLAYGROUND AREA
 - Component Structure
 - Swings
 - Rubber mulch play surfacing
- 2 PICNIC SHELTER (2 TABLES)
- 3 SIDEWALK AND CROSSWALK

RECOMMENDATIONS LEGEND:

- PLAY SURFACE TRANSITION RAMP
- ACCESSIBLE ROUTE





Picnic shelter with 2 tables



Path connection from sidewalk to shelter



Elevated component play structure



Swings



Sidewalk curb ramps are not IDOT compliant



There is not an accessible route or transition to play area

Assessment and Notes:

Park:

- Signage: Proper signage is not posted for the blind.
 - ▶ Recommendation: provide braille signage.
- Park Access: Cap Estates park is connected to neighborhood sidewalks. Existing crosswalk does not meet IDOT requirements.
- Picnic Shelter has 2 tables.
 - ▶ Provide (1) accessible picnic table.

Playground:

- Playground Access: no accessible route to enter play area.
 - ▶ Recommendation: Provide accessible route connection to playground and transition curb from path to rubber mulch play surface.

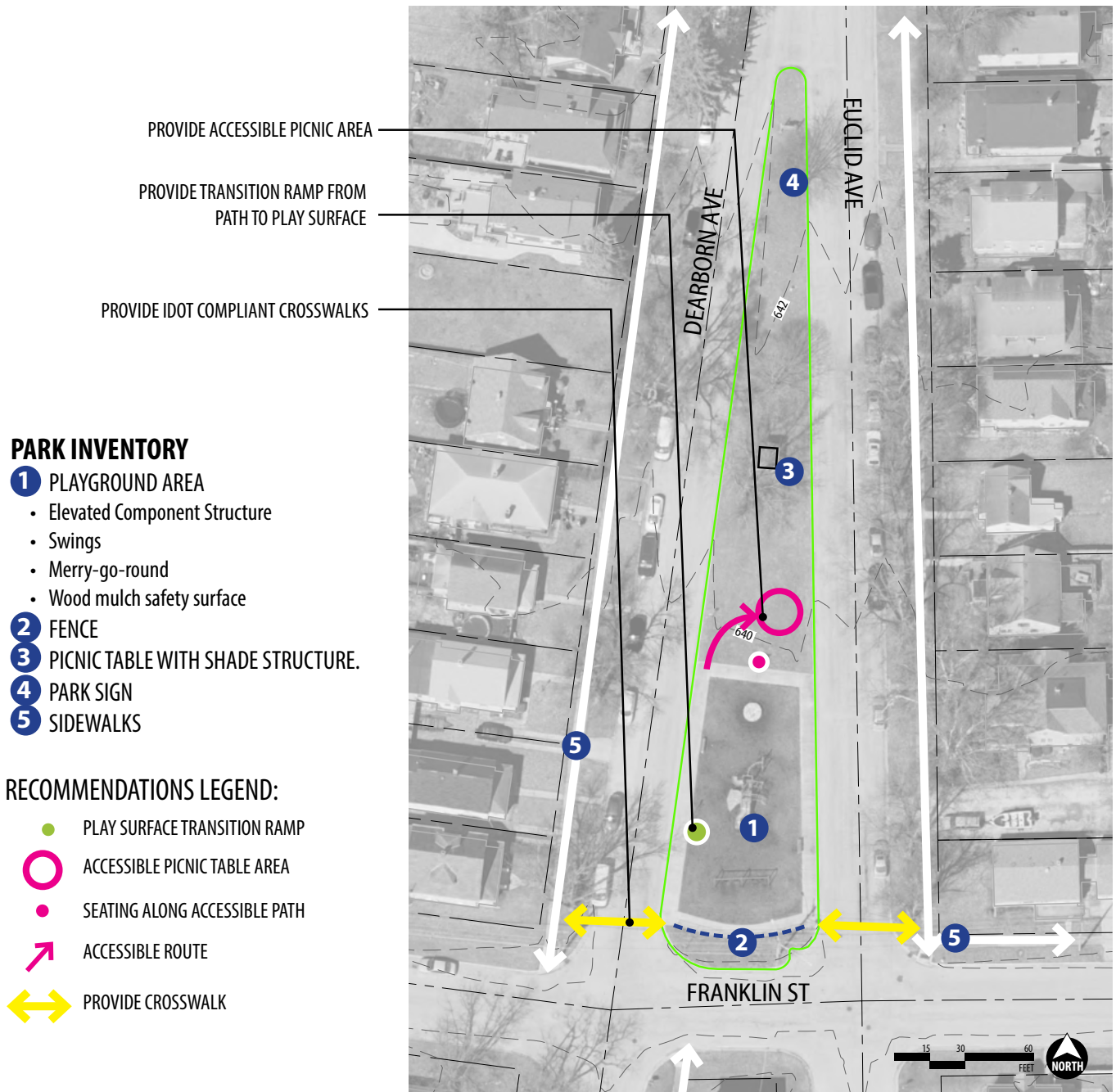
GUIDE NOTE: All Recommendations listed under the triangle bullets (▶) are included in Part 3 Cost Estimates.

03 FRANKLIN PARK

S Euclid Ave. and Franklin St.

PARK DESCRIPTION

(0.25) Acre neighborhood pocket park set in large roadway parkway. Features playground and picnic table with shade structure.





Curb ramps are not IDOT compliant a do not connect with a crosswalk



Elevated play component structure



Merry-Go-Round is ground level accessible play component.



Bench in playground area. Footings are exposed and seat height is above the 19" maximum.



Transfer platform provides access to elevated play components



Elevated play component structure

Assessment and Notes:

Park:

- Park Access: Franklin Park provides an accessible path around the playground. The neighborhood has a sidewalk network, but there are not IDOT compliant crosswalks connecting the park to sidewalks across the street.
- Signage: Proper signage is not posted for the blind.
 - ▶ Recommendation: provide braille signage.
- Seating: No accessible seating available.
 - ▶ Recommendation: provide accessible park benches.
- Picnic Tables: Park has 1 covered picnic table, not connected by accessible route.
 - ▶ Provide (1) accessible picnic area.

Playground:

- Playground Access: no accessible route to enter play area.
 - ▶ Recommendation: Provide transition curb from path to wood mulch play surface.
- Merry-go-round does not meet safety guidelines
 - ▶ See Recommendations for MERRY-GO-ROUNDS on page 43

GUIDE NOTE: All Recommendations listed under the triangle bullets (▶) are included in Part 3 Cost Estimates.

04 GLENN'S PARK

E. Broadway St. and N. Monroe Ave.

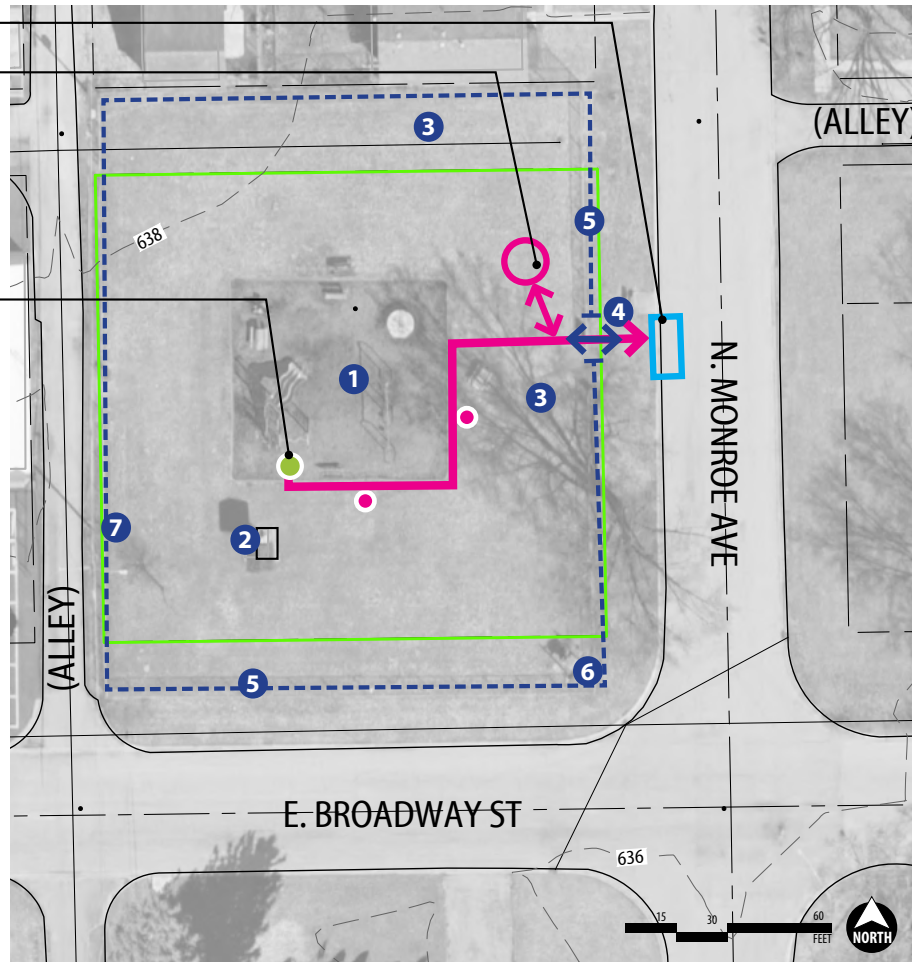
PARK DESCRIPTION

(0.45) acres neighborhood park with playground, open lawn and picnic tables.

Site is controlled by a chain link fence.



- PROVIDE ACCESSIBLE ON-STREET PARKING
- PROVIDE ACCESSIBLE PICNIC AREA
- PROVIDE ACCESSIBLE ROUTE THROUGH PARK CONNECTING PARK ENTRANCES AND AMENITIES



PARK INVENTORY

- 1** PLAYGROUND AREA
 - Elevated play component structure
 - Swings
 - Merry-go-round
 - Purple Dinosaur Spring Rocker
 - Wood fiber (mulch) safety surface
- 2** PICNIC TABLE WITH SHADE STRUCTURE
- 3** FREESTANDING PICNIC TABLES
- 4** PARK ENTRANCE
- 5** CHAIN LINK FENCE AROUND PARK
- 6** PARK SIGN
- 7** LIGHTING

RECOMMENDATIONS LEGEND:

- PLAY SURFACE TRANSITION RAMP
- HANDICAP ACCESSIBLE ON-STREET PARKING
- ACCESSIBLE PICNIC TABLE AREA
- SEATING ALONG ACCESSIBLE PATH
- ➔ ACCESSIBLE ROUTE



(2) Freestanding picnic tables. Park perimeter is controlled by a chain link fence.



Elevated play component structure. Transfer station is provided.



Safety surface level is too low relative to play equipment.



Dinosaur rocker installation does not meet safety guidelines.



Covered picnic table. No accessible tables provided.



Ground level play panel has been removed.

Assessment and Notes:

Park:

- Park has no interior accessible routes.
 - ▶ Recommendation: create a pathway system to connect playground and picnic table with park entrance.
- Park is not connected to a neighborhood pedestrian network. Neighborhood does not have sidewalks or crosswalks.
- Signage: Proper signage is not posted for the blind.
 - ▶ Recommendation: provide braille signage.
- Parking: on-street parking is available.
 - ▶ Recommendation: provide (1) accessible parking spot with accessible route to park amenities.
- Seating: No accessible seating available.
 - ▶ Recommendation: provide accessible park benches
- Picnic Tables: Park has 1 covered picnic table and 2 freestanding picnic tables. No tables are connected by accessible route.
 - ▶ Provide (1) accessible picnic area.

GUIDE NOTE: All Recommendations listed under the triangle bullets (▶) are included in Part 3 Cost Estimates.

Playground:

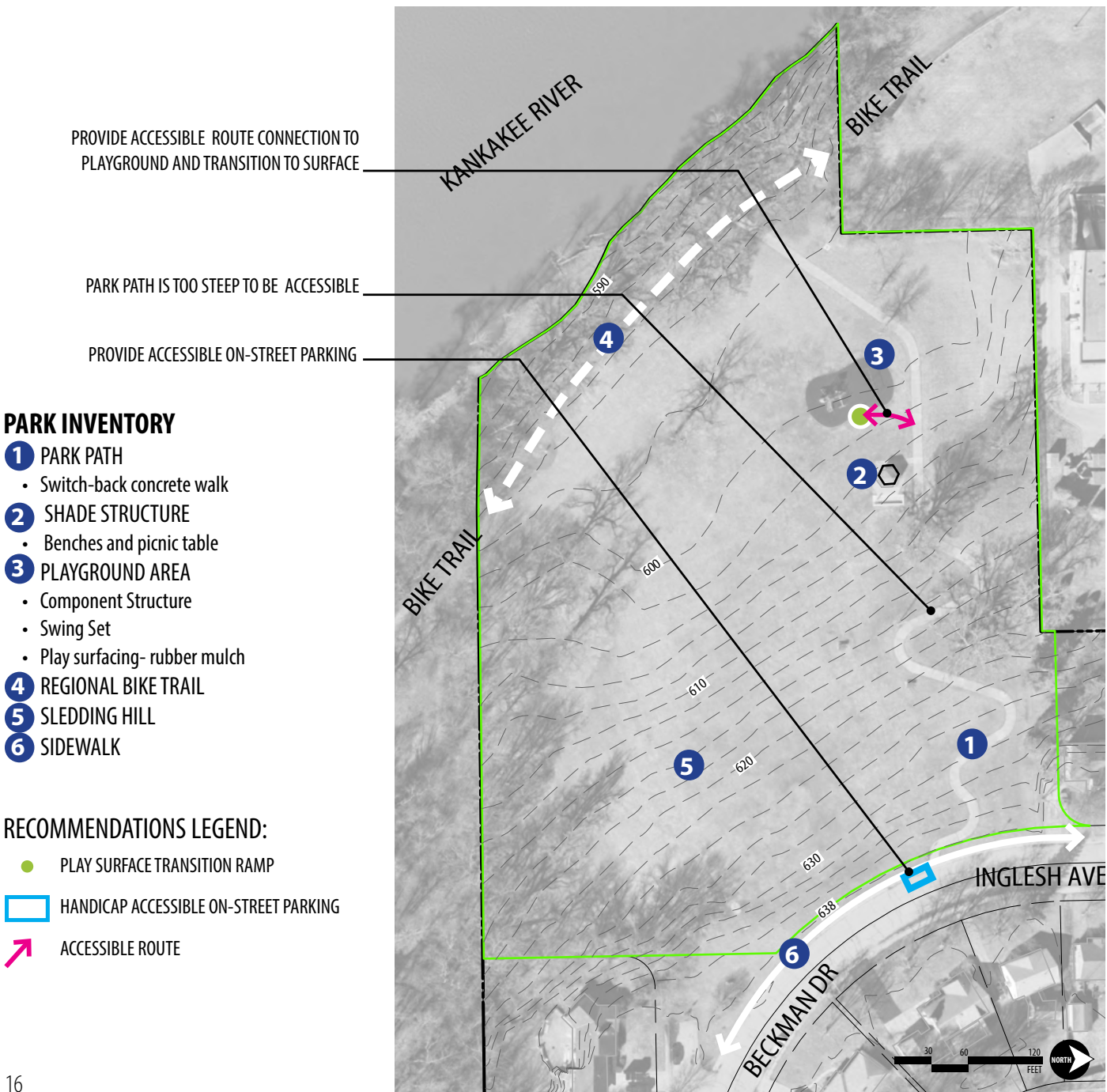
- Safety Surface is too low relative to play equipment
 - ▶ Recommendation: Increase level of safety surface to meet impact attenuation and height requirements for play equipment, including slide exit and transfer platforms. For example, transfer platform should be between 11-18" above safety surface.
- Playground Access: no accessible route to enter play area.
 - ▶ Recommendation: Provide accessible route connection to playground and transition curb from path to wood mulch play surface.
- Merry-go-round does not meet safety guidelines
 - ▶ See Recommendations for [MERRY-GO-ROUNDS](#) on page 43
- Purple dinosaur spring rocker does not meet safety guidelines
 - ▶ See Recommendations for [DINOSAUR SPRING ROCKER](#) on page 42

05 HELGESON MEMORIAL PARK

Inglesh Ave. and Beckman Dr.

PARK DESCRIPTION

(6) Acre park with mix of active and passive recreation. Features include large open lawn spaces, river front access, playground and shade structure with seating. The sloped property is a popular sledding hill. The park is bordered on the east by the Kankakee river, on the north by the KRMA wastewater treatment plant and a residential lot. South of the Helgeson Park is the City of Kankakee's Lavoisier Park.





Park path follows a switch back pattern down the hill. Many sections of the path exceed 5% slope



Shade shelter with benches and (1) picnic table



Provide an accessible route to playground



Regional bike path goes through Helgeson Park

Assessment and Notes:

Park:

- Universal Access: switch back path is over 5% slope in many cases, with some locations going over the maximum allowable 8%. Paths over 5% ought to be designed to the requirements of ADA ramps, including hand rails and landings. Thus the playground and the pavilion seating area are not considered accessible. Future park improvement efforts should consult with engineers to determine feasibility and associated costs for path reconstruction.
- Signage: Proper signage is not posted for the blind.
 - ▶ Recommendation: provide braille signage.
- Parking: on-street parking is available.
 - ▶ Recommendation: provide (1) accessible parking spot with accessible route to park amenities.
- Seating:
 - ▶ Recommendation provide park benches along an accessible route.

GUIDE NOTE: All Recommendations listed under the triangle bullets (▶) are included in Part 3 Cost Estimates.

- Note from Parks Department: Helgeson park is a popular destination for sledding in the winter, for which there is not adequate parking available.

Playground:

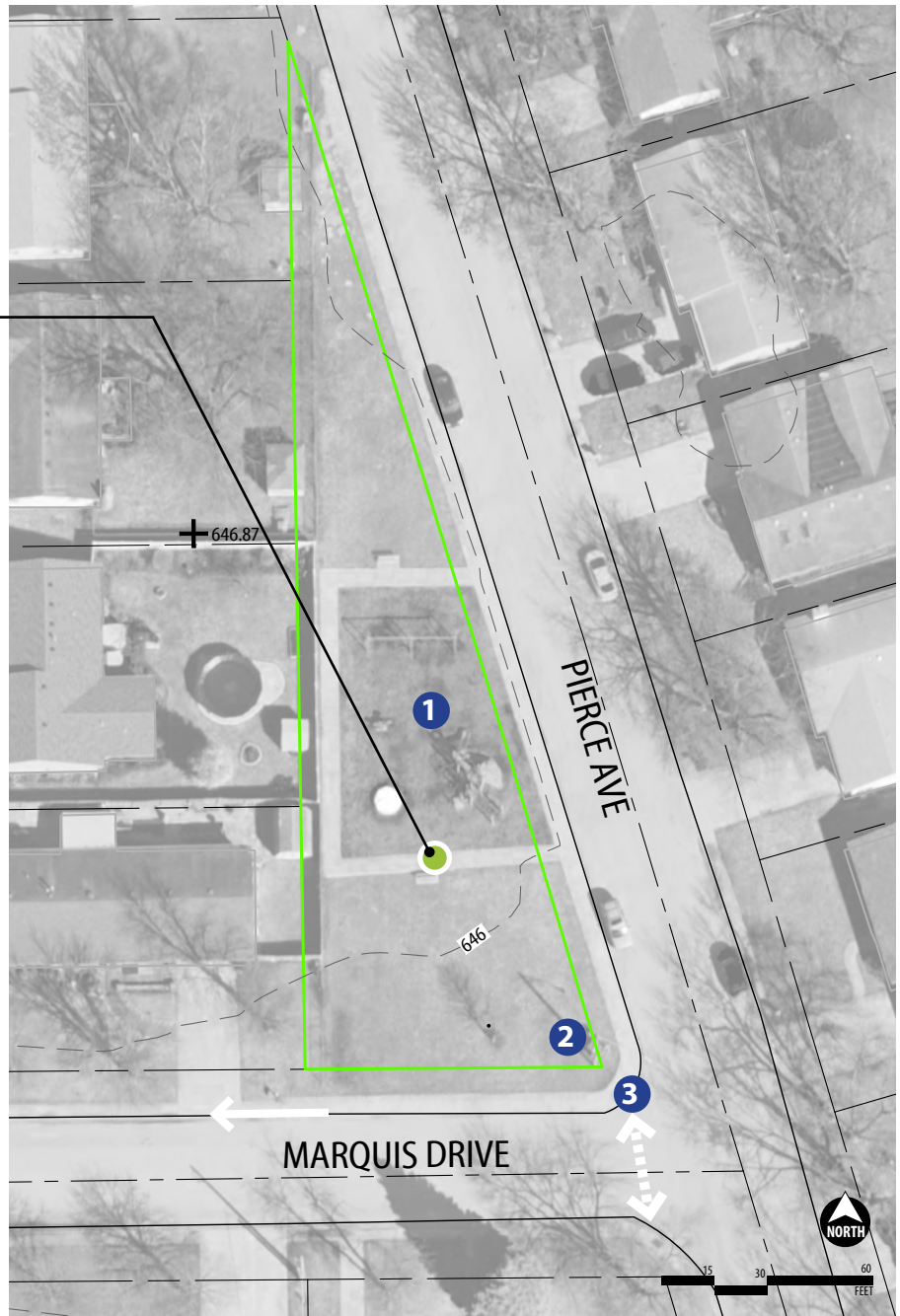
- Playground Access: no accessible route to enter play area.
 - ▶ Recommendation: Provide accessible route connection to playground and transition curb from path to rubber mulch play surface.
- Ensure that appropriate safety surface levels are maintained.

06 JEANETTE PARK

Pierce Ave. and Marquis Dr.

PARK DESCRIPTION

(0.25) Acre small neighborhood pocket park with playground



PROVIDE TRANSITION RAMP FROM PATH TO PLAY SURFACE

PARK INVENTORY

- 1 PLAYGROUND AREA
 - Component Structure
 - Swings
 - Merry-go-round
 - Dinosaur spring rocker
 - Play surfacing- wood fiber (mulch)
- 2 PARK SIGN
- 3 EXISTING CROSSWALK

RECOMMENDATIONS LEGEND:

- PLAY SURFACE TRANSITION RAMP



Elevated play component structure



Swings



Merry-go-round and dinosaur spring rocker



Existing crosswalk does not meet IDOT requirements



Ground level play panel



Merry-go-round does not meet safety guidelines, clear space under platform is too tall.

Assessment and Notes:

Park:

- Park Access: Jeanette park is connected to sidewalk network. There is an existing crosswalk at Marquis and Pierce. Crosswalk and curb ramp do not meet current IDOT requirements.
- Signage: Proper signage is not posted for the blind.
 - ▶ Recommendation: provide braille signage.

Playground:

- Playground Access: no accessible transition to playground surface
 - ▶ Recommendation: Provide transition ramp from path to wood mulch play surface.
- Merry-go-round does not meet safety guidelines
 - ▶ See Recommendations for MERRY-GO-ROUNDS on page 43
- Purple dinosaur spring rocker does not meet safety guidelines
 - ▶ See Recommendations for DINOSAUR SPRING ROCKER on page 42

GUIDE NOTE: All Recommendations listed under the triangle bullets (▶) are included in Part 3 Cost Estimates.

07 JOHN'S PARK

Liberty St. & Jefferson Ave.

PARK DESCRIPTION

(1.0) Acre park with T-ball backstop



PARK INVENTORY

- 1 T-BALL BACKSTOP
- 2 SWINGS
- 3 PARK SIGN
- 4 LIGHTING





Swings at John's Park do not provide proper safety surfacing



Baseball diamond. No player or spectator seating provided



Park has no interior paths and there are no sidewalk connections

Assessment and Notes:

Park:

- Signage: Proper signage is not posted for the blind.
 - ▶ Recommendation: provide braille signage.
- Park has no interior accessible routes.
- Park is not connected to an accessible pedestrian network. Neighborhood does not have sidewalks or crosswalks.

Playground:

- Swings at John's park do not meet safety or accessibility recommendations. Safety Surfacing is required for the full area of use zone of the swings (see PPSH section 5.3.8.3.3), with an impact attenuation rated for per the Fall Height, which is measured as the difference from the pivot point of the swing to the ground surface, field measured at 10'.
 - ▶ Recommendation: Options include removing swing set or installing proper play safety surfacing and provide accessible route with transition curb to access swings.

GUIDE NOTE: All Recommendations listed under the triangle bullets (▶) are included in Part 3 Cost Estimates.

08 LEGION PARK

855 W Broadway St.

PARK DESCRIPTION

(0.44) Acre veterans memorial park in downtown area of Bradley. Next to the American Legion Post building. Formal park with monuments.



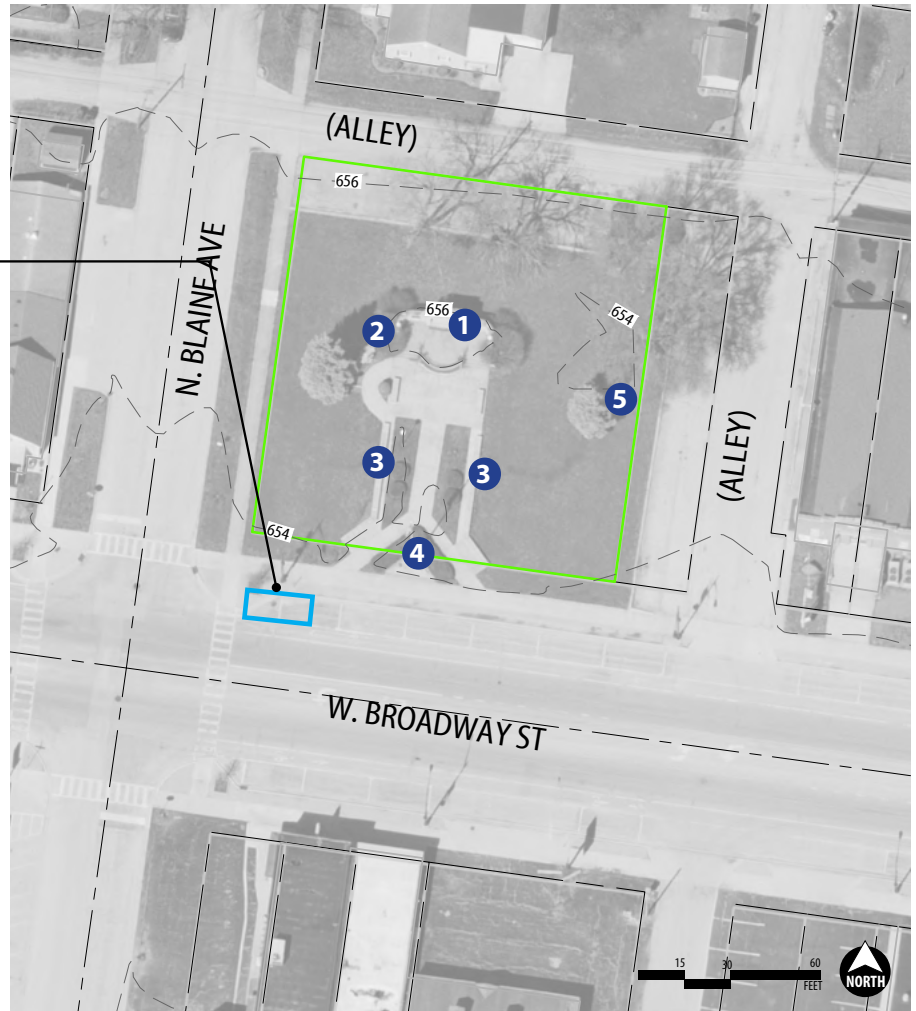
PROVIDE ACCESSIBLE ON-STREET PARKING

PARK INVENTORY

- 1 MEMORIAL WALL
- 2 MEMORIAL STONE
- 3 SEAT WALLS
- 4 FLAG POLE
- 5 MEMORIAL TREE

RECOMMENDATIONS LEGEND:

 HANDICAP ACCESSIBLE ON-STREET PARKING





Seat walls have superficial skateboard barriers attached.



World War I Veterans Memorial. Natural stone monument with brass plaques.



Stone masonry monument. Central granite tablets commemorate World War II veterans. Sidewalls feature plaques commemorating veterans of the Gulf, Korean and Vietnam wars.



Crosswalks are not IDOT compliant



Lamp has been removed. Base and wires remain which poses a safety hazard and should be addressed



Flag pole

Assessment and Notes:

Park:

- Signage: Proper signage is not posted for the blind.
 - ▶ Recommendation: provide braille signage.
- Parking: on-street parking is available.
 - ▶ Recommendation: provide (1) accessible parking spot with accessible route to park amenities.
- Monument: Steps do not provide compliant handrails. No ramp or other means of universal access to platform.
- Park Access: Sidewalk does not provide compliant curb ramps at pedestrian crossings.
- Note: Lamp post removed, remaining base is damaged. Electrical wires capped.

GUIDE NOTE: All Recommendations listed under the triangle bullets (▶) are included in Part 3 Cost Estimates.

09 LIL'S PARK

1373 E. North St.

PARK DESCRIPTION

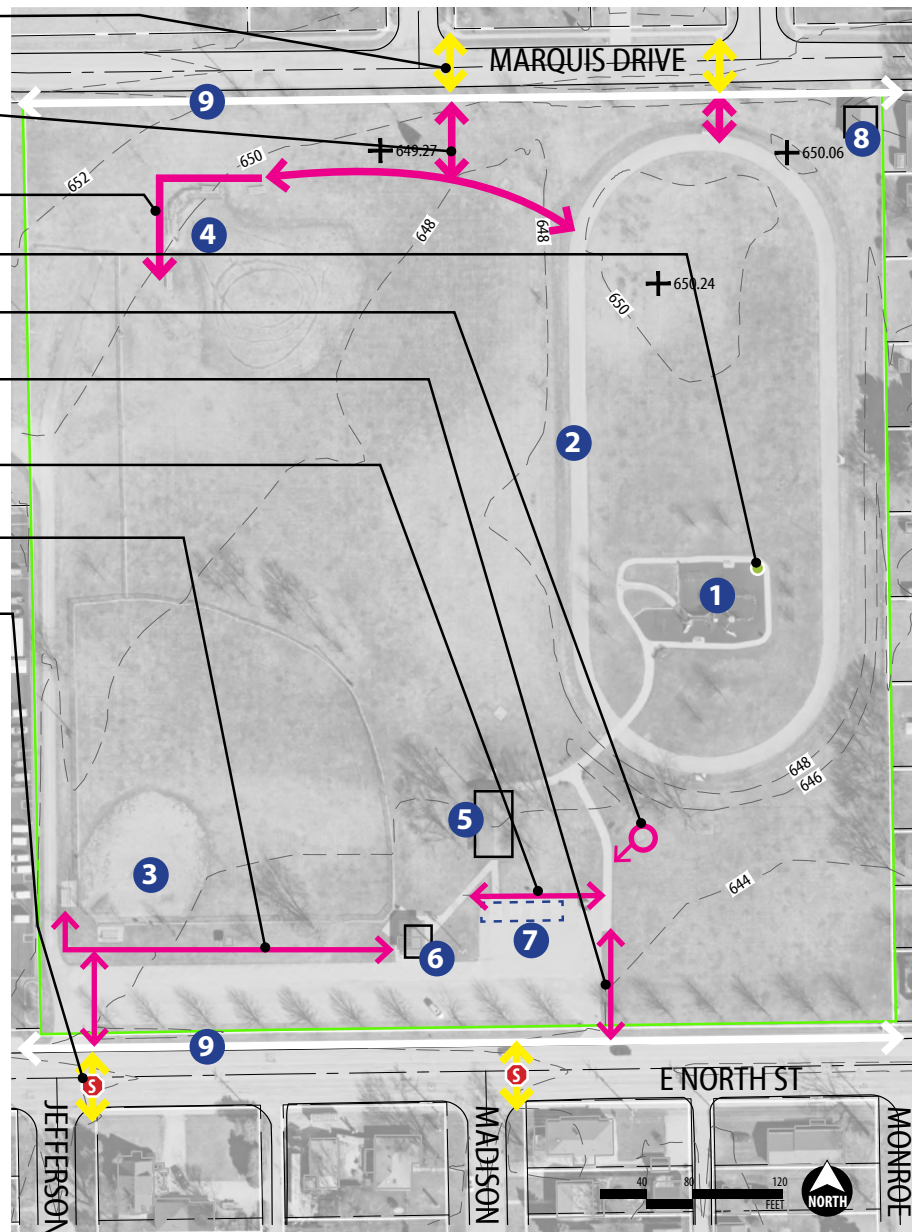
(14.5) Acre large regional park with features that include baseball fields, a walking track, playground, picnic shelter, and open space, with off-street parking and a bathroom building.



- PROVIDE CROSSWALK CONNECTIONS AT MARQUIS DR
- PROVIDE PARK ENTRANCES FROM THE NORTH AND CONNECT WITH EXISTING ACCESSIBLE ROUTES
- PROVIDE ACCESSIBLE ROUTE AND SEATING FOR NORTH BASEBALL FIELD
- PROVIDE TRANSITION RAMP TO PLAY SURFACE
- PROVIDE ACCESSIBLE PICNIC AREA
- CONNECT SIDEWALKS TO PARK ACCESSIBLE ROUTES
- PROVIDE ACCESSIBLE ROUTE FROM ADA PARKING ACCESS AISLES
- PROVIDE ACCESSIBLE ROUTE AND SEATING FOR NORTH BASEBALL FIELD
- PROVIDE CROSSWALK CONNECTIONS AT NORTH ST. STOP SIGNS MAY BE REQUIRED

PARK INVENTORY

- 1** PLAYGROUND
 - Elevated play component structure with ramp access
 - Ground level component system
 - Swings
 - Rubber mulch safety surface
- 2** WALKING TRACK
- 3** SOUTH BASEBALL FIELD
- 4** NORTH BASEBALL FIELD
- 5** PICNIC SHELTER
- 6** COMFORT STATION
- 7** OFF-STREET PARKING
 - (4) Accessible stalls
- 8** STORAGE BUILDING
- 9** SIDEWALKS



RECOMMENDATIONS LEGEND:

- PLAY SURFACE TRANSITION RAMP
- ↗ ACCESSIBLE ROUTE
- ACCESSIBLE PICNIC TABLE AREA
- ↔ PROVIDE CROSSWALK



Walking track



Ramp access to elevated play component structure



Utility poles and Emergency alert siren. Picnic shelter in the background



Parking lot and South Baseball Field



Restroom Building (Restrooms, drinking fountains, utilities)



Ground level play component structure

Assessment and Notes:

Park:

- Accessible park route does not connect to sidewalks on either north or south sides of park, nor to the baseball fields.
 - ▶ Provide continuous accessible route connecting all park amenities and entrances.
- Parking: Park has off-street parking with (4) Accessible stalls.
 - ▶ Provide accessible route from ADA access aisles to park paths.
- Park does not have safe pedestrian access. Provide crosswalks across North St. and Marquis Dr.
 - Traffic study required for crosswalks across North St.
- Signage: Proper signage is not posted for the blind.
 - ▶ Recommendation: provide braille signage.
- Picnic Shelter has (7) tables with (1) ADA table provided. Neither of the (2) grills stations are accessible.

- Individual Picnic areas: There are (2) concrete pads that are likely intended to be for picnic tables but are empty. There are a handful of freestanding picnic tables throughout the park.
 - ▶ Provide at least (1) ADA accessible individual picnic area.

Playground:

- Playground Access: no accessible transition to safety surface.
 - ▶ Recommendation: Provide transition curb from path to rubber mulch play surface.

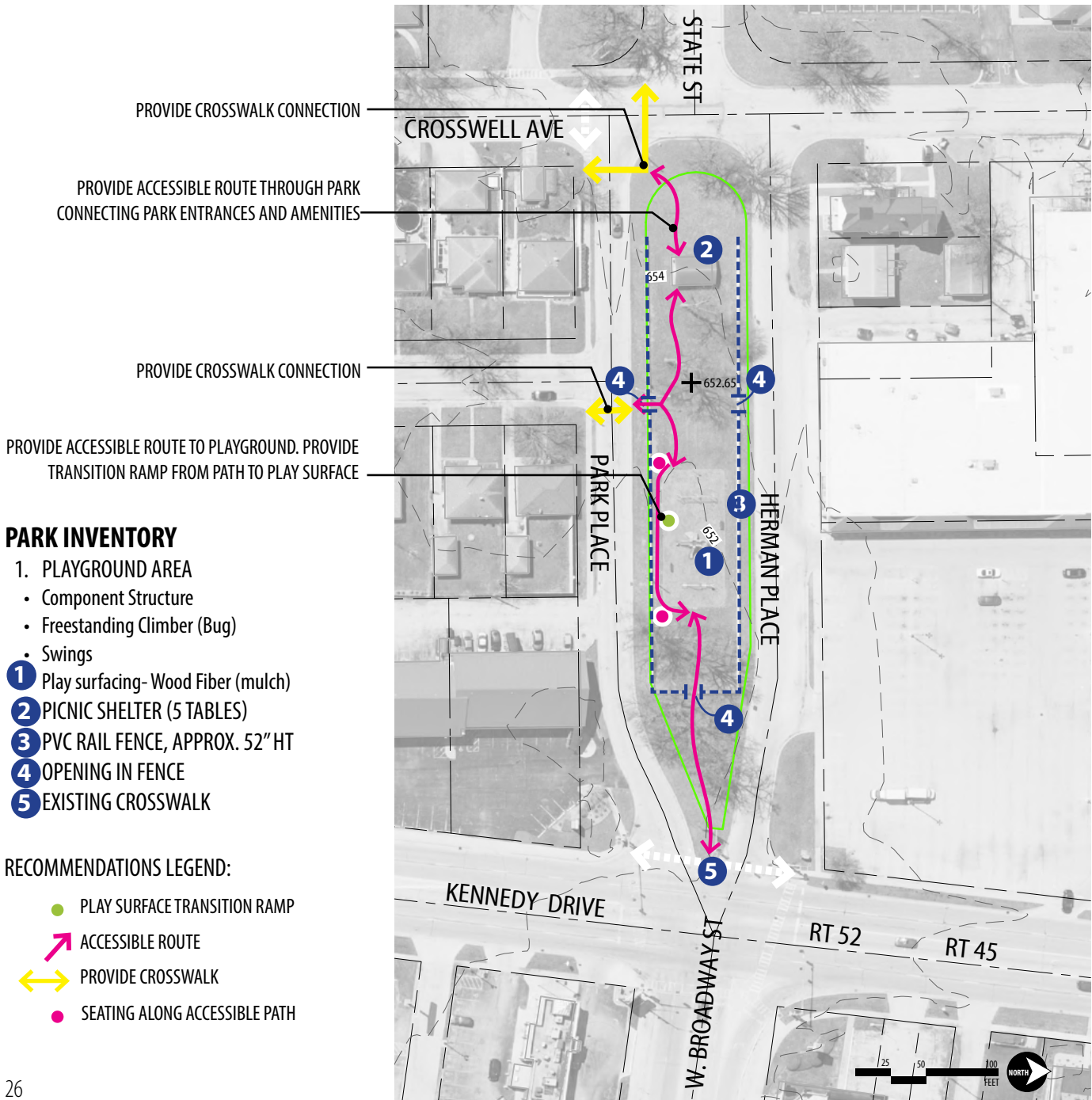
GUIDE NOTE: All Recommendations listed under the triangle bullets (▶) are included in Part 3 Cost Estimates.

10 LION'S PARK

W. Broadway St./ Park Pl. & Kennedy Dr.

PARK DESCRIPTION

(0.75) Acre park located within large parkway area between Park Place and Herman Place, at west side of intersection of Broadway St. and Kennedy Dr. Bradley West Elementary school is to the west of the park across Crosswell Ave. Park features play area, picnic shelter and open lawns. Park is sponsored by the Lion's club.





East park entrance



South park entrance



Bench in playground area. Seat height is too high, measured at approx 26", max per code is 19"



Picnic Shelter. Provide accessible route to shelter connecting to park entrances. Provide ADA picnic table.



Transfer Platform at elevated play component structure



Remnants of safety surface level indicator sticker.

Assessment and Notes:

Park:

- Park has no interior accessible routes.
 - ▶ Recommendation: create a pathway system to connect playground and picnic shelter with park entrances.
- Park has limited access to neighborhood pedestrian network. The only available crosswalk connection to the park is along Kennedy Dr. Recommendation: Provide crosswalk and sidewalk connections at corners of Crosswell Ave and State St, and Park Place and Stanek Court
- Signage: Proper signage is not posted for the blind.
 - ▶ Recommendation: provide braille signage.
- Seating: No accessible seating available.
 - ▶ Recommendation to provide accessible park benches along an accessible route.

Playground:

- Safety Surface is too low relative to play equipment. Recommendation: Increase level of safety surface to meet impact attenuation and height requirements for play equipment, including slide exit and transfer platforms. For example, transfer platform should be between 11-18" above safety surface.

GUIDE NOTE: All Recommendations listed under the triangle bullets (▶) are included in Part 3 Cost Estimates.

11 NEWTOWNE PARK

819 Signature St.

PARK DESCRIPTION

(1.66) Acre neighborhood pocket park with playground. Adjacent open space is a drainage area.

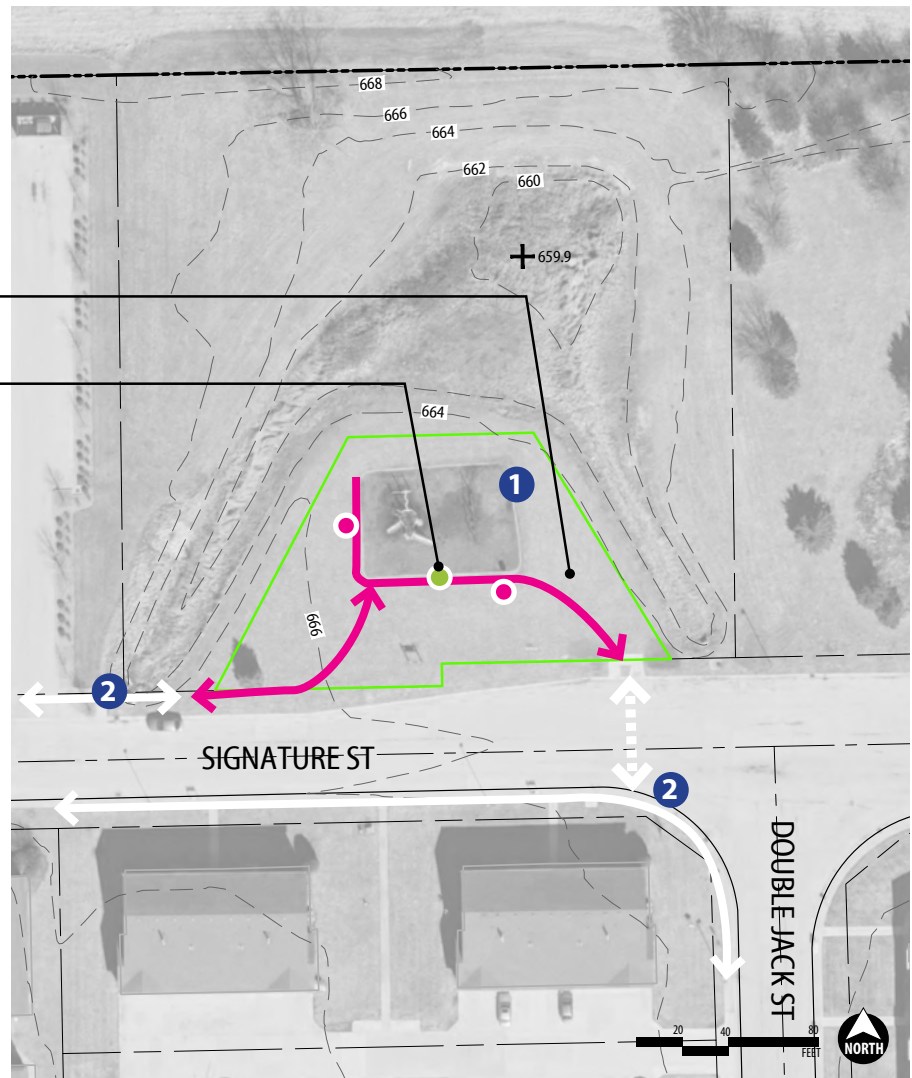


PROVIDE ACCESSIBLE ROUTE CONNECTING SIDEWALKS TO PLAYGROUND TO PLAYGROUND

PROVIDE TRANSITION RAMP FROM PATH TO PLAY SURFACE

PARK INVENTORY

- 1 PLAYGROUND AREA
 - Component Structure
 - Swings
 - Wood mulch play surfacing
- 2 SIDEWALK AND CROSSWALK



RECOMMENDATIONS LEGEND:

- PLAY SURFACE TRANSITION RAMP
- ACCESSIBLE ROUTE
- SEATING ALONG ACCESSIBLE PATH



Elevated play component structure



Elevated play component structure



Crosswalk and bus stop platform



Playground



Transfer platform measured approx. 10" above surface



Bike rack with sponsorship logo

Assessment and Notes:

Park:

- Park has no interior accessible routes.
 - ▶ Recommendation: create a pathway system to connect playground and picnic table with crosswalk
- Signage: Proper signage is not posted for the blind.
 - ▶ Recommendation: provide braille signage.
- Seating: No accessible seating available.
 - ▶ Recommendation: provide park benches along an accessible route

▶ Playground:

- Safety Surface is too high relative to play equipment, transfer platform should be between 11-18" above safety surface.
- Playground Access: no accessible route to enter play area.
 - ▶ Recommendation: Provide accessible route connection to playground and transition curb from path to play surface.

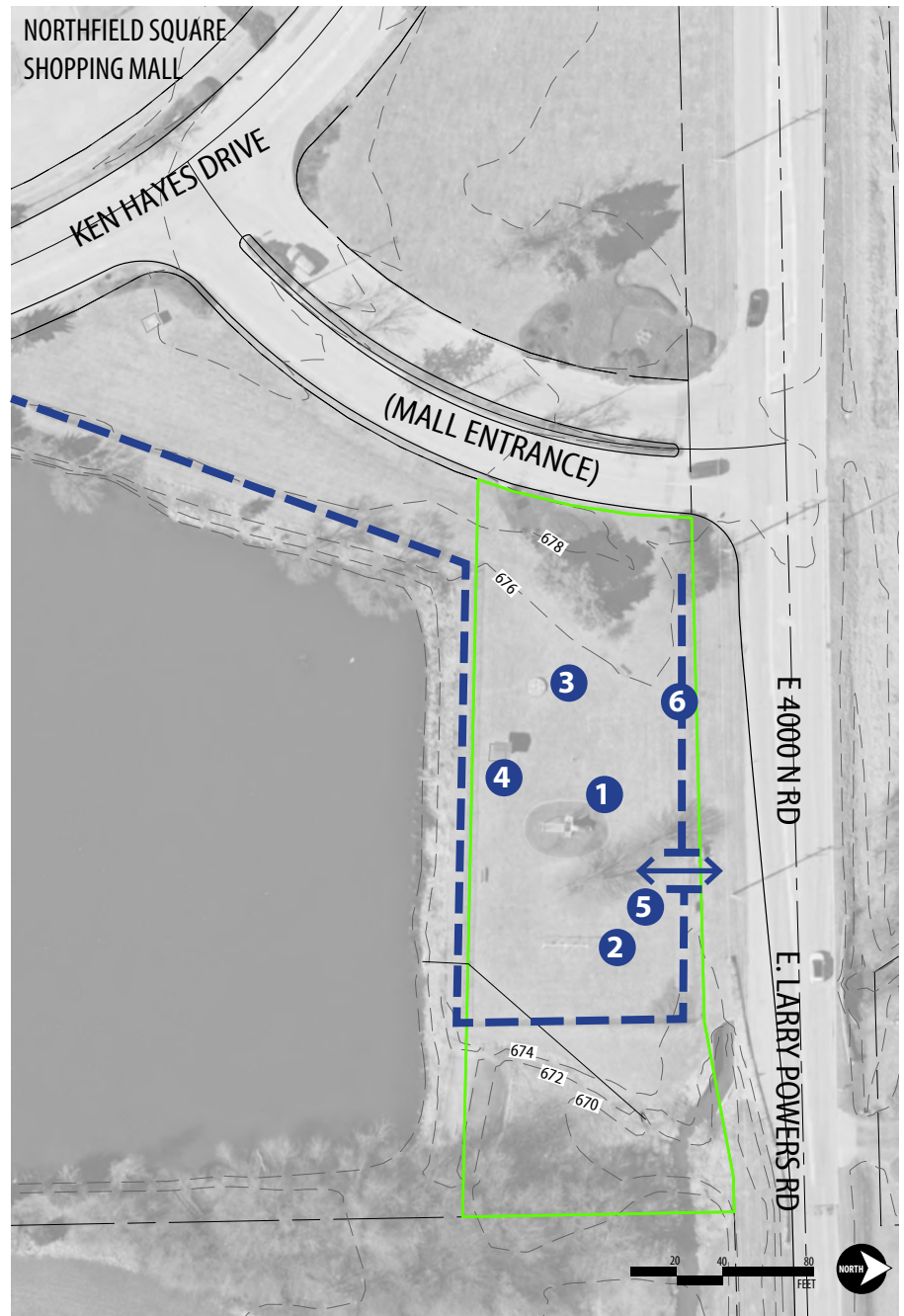
GUIDE NOTE: All Recommendations listed under the triangle bullets (▶) are included in Part 3 Cost Estimates.

12 NORTHFIELD PARK

Larry Power Rd. and Ken Hayes Dr.

PARK DESCRIPTION

(1.66) Acre playground and open space. Adjacent to drainage pond. Outlot of Northfield Square shopping mall.



PARK INVENTORY

- 1 ELEVATED PLAY STRUCTURE
- 2 SWINGS
- 3 MERRY-GO-ROUND
- 4 PICNIC TABLE WITH SHADE STRUCTURE
- 5 ENTRANCE
- 6 CHAIN LINK FENCE



Picnic table with shade structure



Playground equipment footings are exposed. Safety surface mulch is extremely compacted and overgrown



No safety surfacing at Swings



Play equipment does not meet current design standards



Entrance to park along E. Larry Powers Rd



Safety Surfacing is too low for play equipment height requirements and impact attenuation requirements

Assessment and Notes:

Park:

Park Accessibility: Northfield Park is completely inaccessible. There are no sidewalk connections and it is not within a safe 10 minute walk from any residential areas.

Playground:

- Play equipment is aged and in poor condition and poses safety risks.
- Play surfacing at structure is extremely low and compacted. Footings are exposed
- No safety surfacing provided at swings or merry-go-round

- ▶ **RECOMMENDATION:** Remove all play equipment. [temporary]
 - Consider concepts to reconstruct entire park as a naturalized area with passive recreation opportunities. Provide sidewalk connection to parking at Mall lot.

GUIDE NOTE: All Recommendations listed under the triangle bullets (▶) are included in Part 3 Cost Estimates.

13 WILL PONIKVAR PARK

Hemlock Ln. and Ivy Ln.

PARK DESCRIPTION

(1.66) Acre neighborhood park. Features playground, tennis, basketball, picnic shelter, open lawn space.







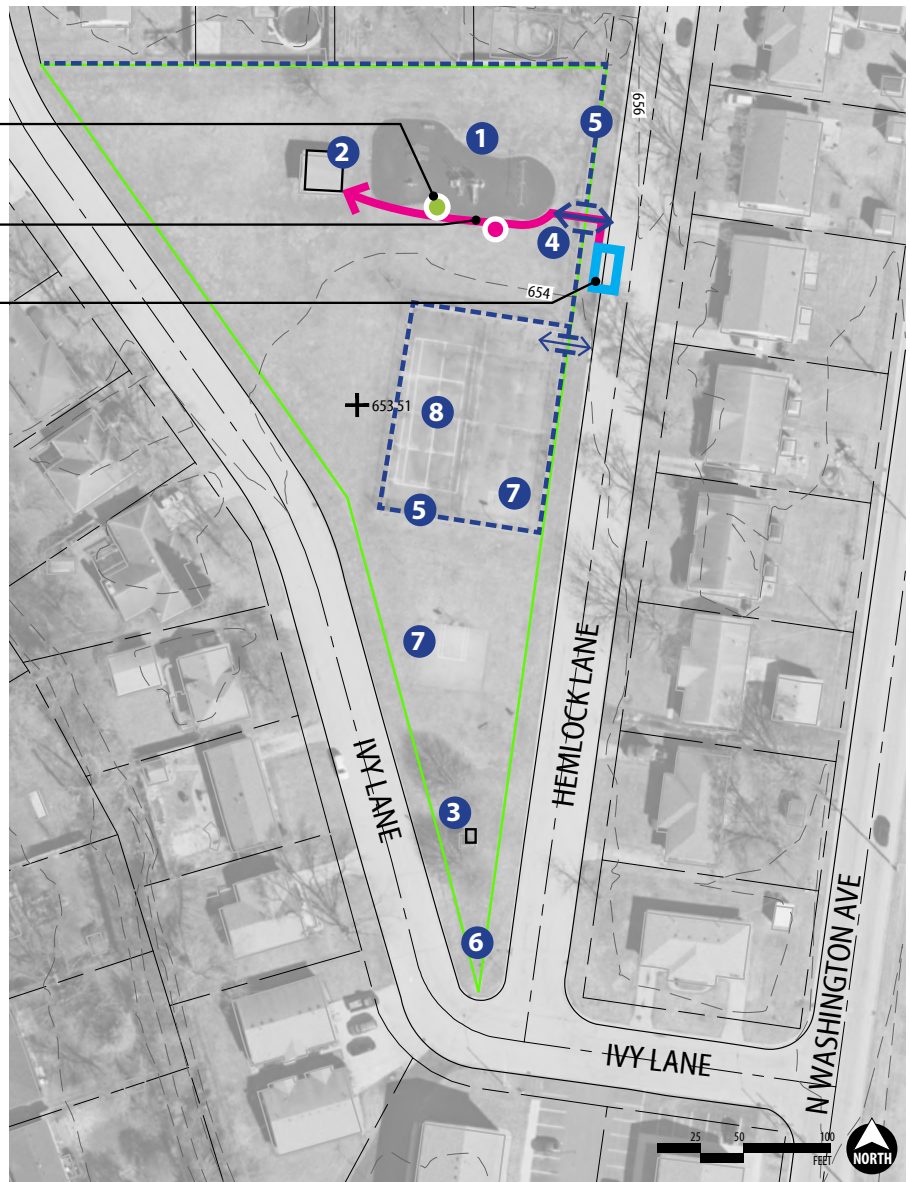
- PROVIDE TRANSITION RAMP FROM PATH TO PLAY SURFACE
- PROVIDE ACCESSIBLE ROUTE THROUGH PARK CONNECTING PARK ENTRANCES AND AMENITIES
- PROVIDE ACCESSIBLE ON-STREET PARKING

PARK INVENTORY

- 1** PLAYGROUND AREA
 - Elevated play component structure
 - Swings
 - Climbing structure
 - Purple Dinosaur Spring Rocker
 - Rubber mulch safety surface
- 2** PICNIC SHELTER
- 3** PICNIC TABLE WITH SHADE STRUCTURE.
- 4** PARK ENTRANCE
- 5** CHAIN LINK FENCE
- 6** PARK SIGN
- 7** HALF-COURT BASKETBALL
- 8** TENNIS COURT

RECOMMENDATIONS LEGEND:

-  PLAY SURFACE TRANSITION RAMP
-  HANDICAP ACCESSIBLE ON-STREET PARKING
-  SEATING ALONG ACCESSIBLE PATH
-  ACCESSIBLE ROUTE





Picnic table with shade structure



Stub from partially removed tennis net post



Playground



Playground



Picnic shelter



Park Entrance at Hemlock Lane

Assessment and Notes:

Park:

- Park has no interior accessible routes.
 - ▶ Recommendation: create a pathway system to connect playground and picnic shelter with park entrance.
- Park is not connected to a neighborhood pedestrian network. Neighborhood does not have sidewalks or crosswalks.
- Signage: Proper signage is not posted for the blind.
 - ▶ Recommendation: provide braille signage.
- Parking: on-street parking is available.
 - ▶ Recommendation: provide (1) accessible parking spot with accessible route to park amenities.
- Seating: No accessible seating available.
 - ▶ Recommendation: provide park benches along an accessible route

- Picnic Shelter is not accessible
 - ▶ Create accessible route connection to picnic shelter and provide (1) accessible picnic table.
- Consider consolidating paved sport court areas (Tennis and Basketball)
- Note: Stubs of tennis net posts pose a trip hazard.

Playground:

- Playground Access: no accessible route to enter play area.
 - ▶ Recommendation: Provide accessible route connection to playground and transition curb from path to rubber mulch play surface.
- Purple dinosaur spring rocker does not meet safety guidelines
 - ▶ See Recommendations for DINOSAUR SPRING ROCKER on page 42

GUIDE NOTE: All Recommendations listed under the triangle bullets (▶) are included in Part 3 Cost Estimates.

14 QUAIL PARK

Quail Dr. and Armour Rd.

PARK DESCRIPTION

(1.75) Acre neighborhood park. Features playground, tennis, basketball, T-ball and open lawn space.



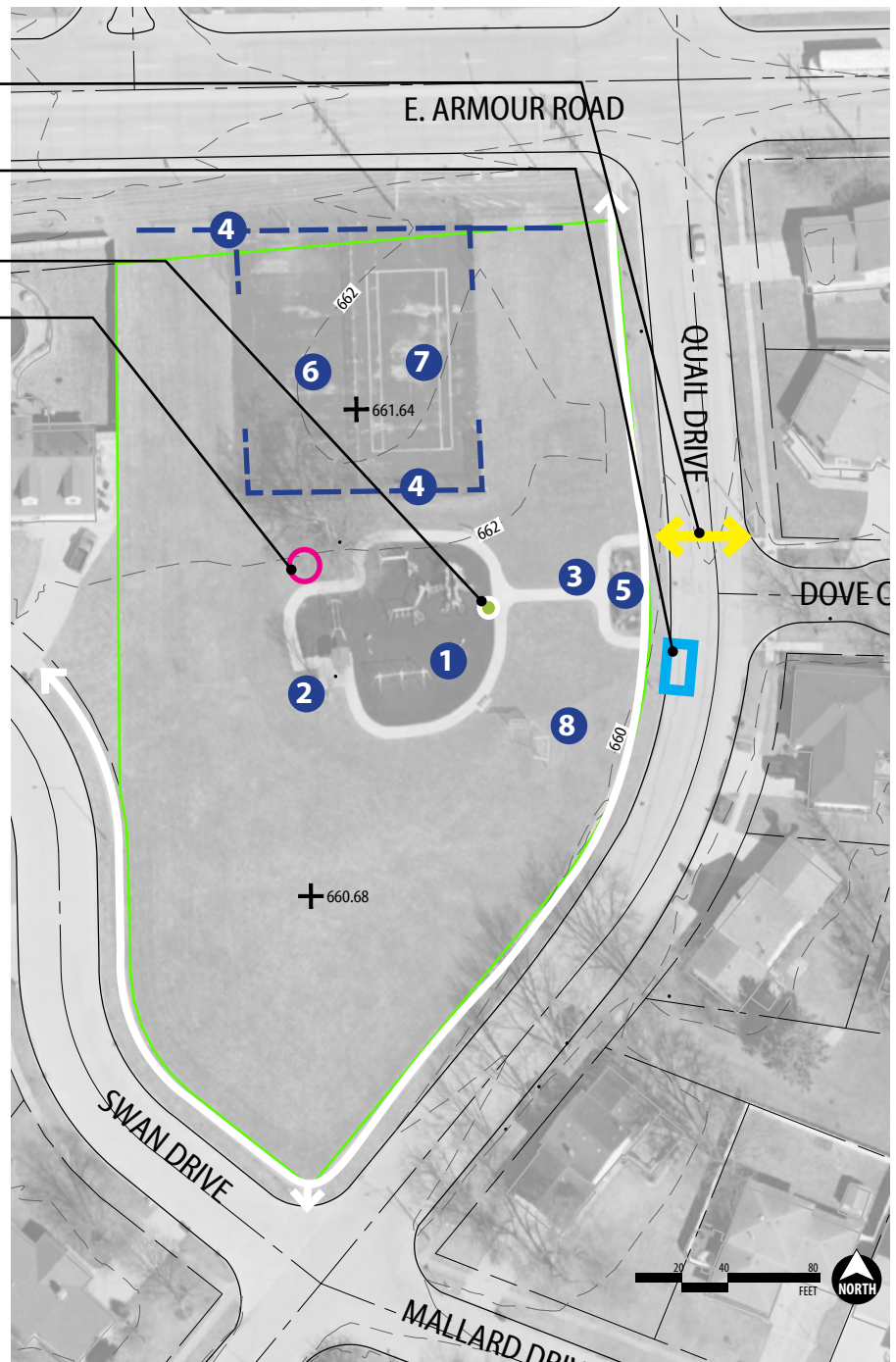
PARK INVENTORY

- 1** PLAYGROUND AREA
 - Elevated play component structure
 - Swings
 - Ground level component structure
 - Zip-line
 - Rubber mulch safety surface
 - See-saw
- 2** PICNIC TABLE WITH SHADE STRUCTURE.
- 3** PARK ENTRANCE
- 4** CHAIN LINK FENCE
- 5** PARK SIGN
- 6** HALF-COURT BASKETBALL
- 7** TENNIS COURT
- 8** T-BALL BACKSTOP

RECOMMENDATIONS LEGEND:

- PLAY SURFACE TRANSITION RAMP
- ACCESSIBLE PICNIC TABLE AREA
- ↔ PROVIDE CROSSWALK
- HANDICAP ACCESSIBLE ON-STREET PARKING

- PROVIDE CROSSWALK AT QUAIL AND DOVE
- PROVIDE ACCESSIBLE ON-STREET PARKING
- PROVIDE TRANSITION RAMP FROM PATH TO PLAY SURFACE
- PROVIDE ACCESSIBLE PICNIC TABLE AREA





Tennis court



Accessible bench at playground



Elevated play component structure



Sidewalks are too narrow at 3' wide. Joints are overgrown



Picnic table with shade structure



T-ball backstop

Assessment and Notes:

Park:

- Signage: Proper signage is not posted for the blind.
 - ▶ Recommendation: provide braille signage.
- Parking: on-street parking is available.
 - ▶ Recommendation: provide (1) accessible parking spot with accessible route to park amenities.
- Park Access: Quail park has pedestrian connections from the west and south. Provide crosswalk at Dove and Quail to connect to the east
- Perimeter ROW sidewalk is too narrow, measured as 3' wide. Minimum width for an accessible path is 4 ft (5' is recommended)
- (1) Picnic table with shade structure provided near playground
 - ▶ Provide accessible picnic area.
- No basketball backboards at existing posts.

GUIDE NOTE: All Recommendations listed under the triangle bullets (▶) are included in Part 3 Cost Estimates.

- Tennis court pavement has major cracking with weeds growing.

Playground:

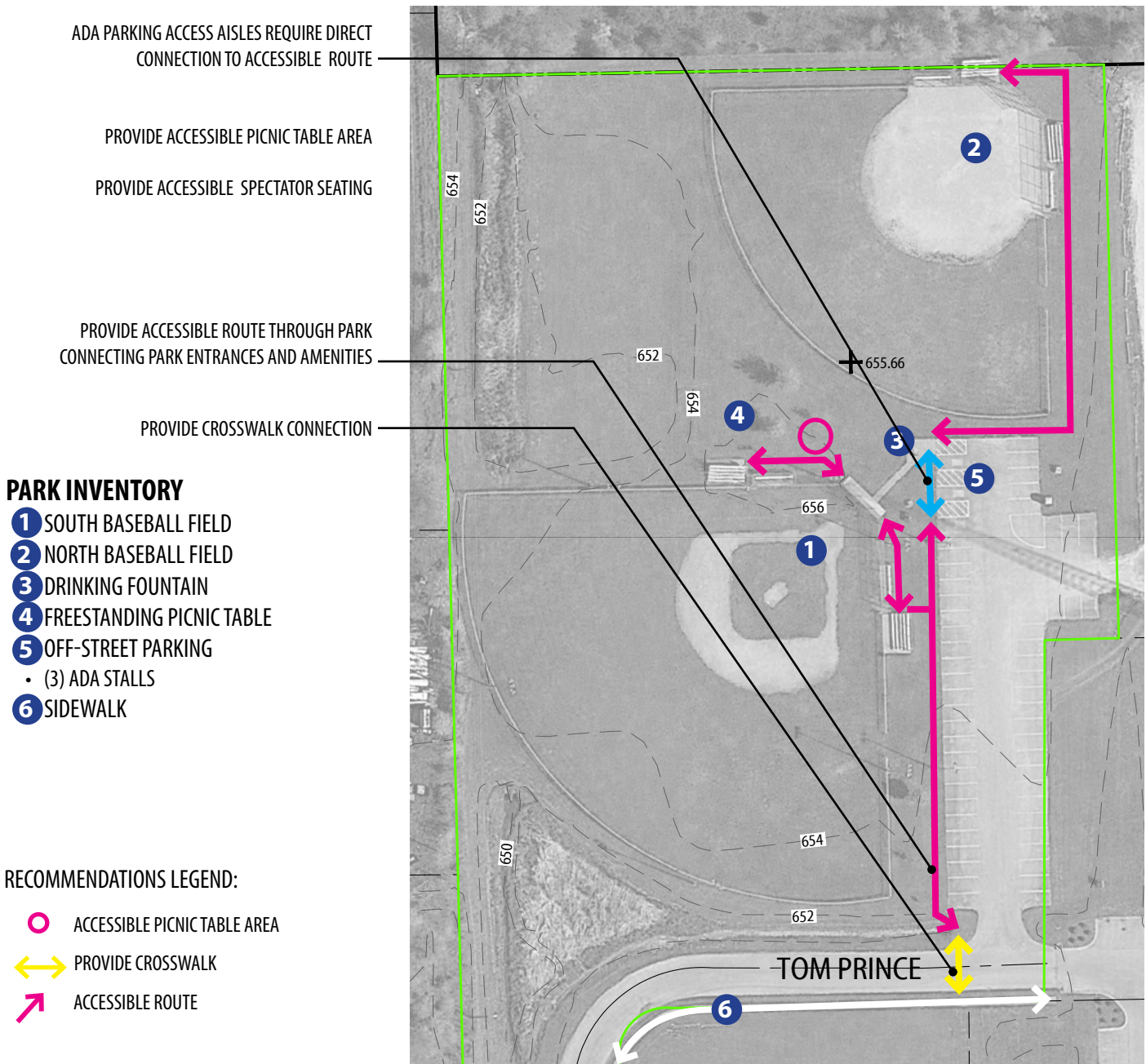
- Playground Access: no accessible transition to playground surface
 - ▶ Recommendation: Provide transition ramp from path to rubber mulch play surface.
- Age group separation: bucket swings and spring rockers and generally intended for the preschool age group. Consider providing signage indicating separate age group areas.

15 ROBERT O. MARTIN SPORTS COMPLEX

Tom Prince Dr. (Industrial Dr.)

PARK DESCRIPTION

(4.0) Acre regional sports park. Features 2 baseball diamonds and off-street parking.





South baseball field home plate



ADA Parking does not have adequate signage or accessible route connection to amenities



Player's dugout area



Monument for field dedications



Drinking fountain and spigot



Spectator seating at south field

Assessment and Notes:

Park:

- Accessible routes do not extend to spectator seating areas, dugouts or pedestrian entrance.
 - ▶ Provide accessible routes to all park amenities and entrances
 - ▶ Provide space for wheel chair seating next to bleachers.
- Park Access: no pedestrian connection to park. Provide cross-walk to connect to sidewalk on Tom Prince Drive.
- Signage: Proper signage is not posted for the blind.
 - ▶ Recommendation: provide braille signage.
- Parking: park has off-street parking with (3) ADA stalls. ADA stalls do not have proper signage or access aisle connections.
 - ▶ Recommendation: Provide vertical ground-mounted signage per IDOT 58-1.04(a)
 - ▶ Provide accessible route connecting access aisles to park path or sidewalk.

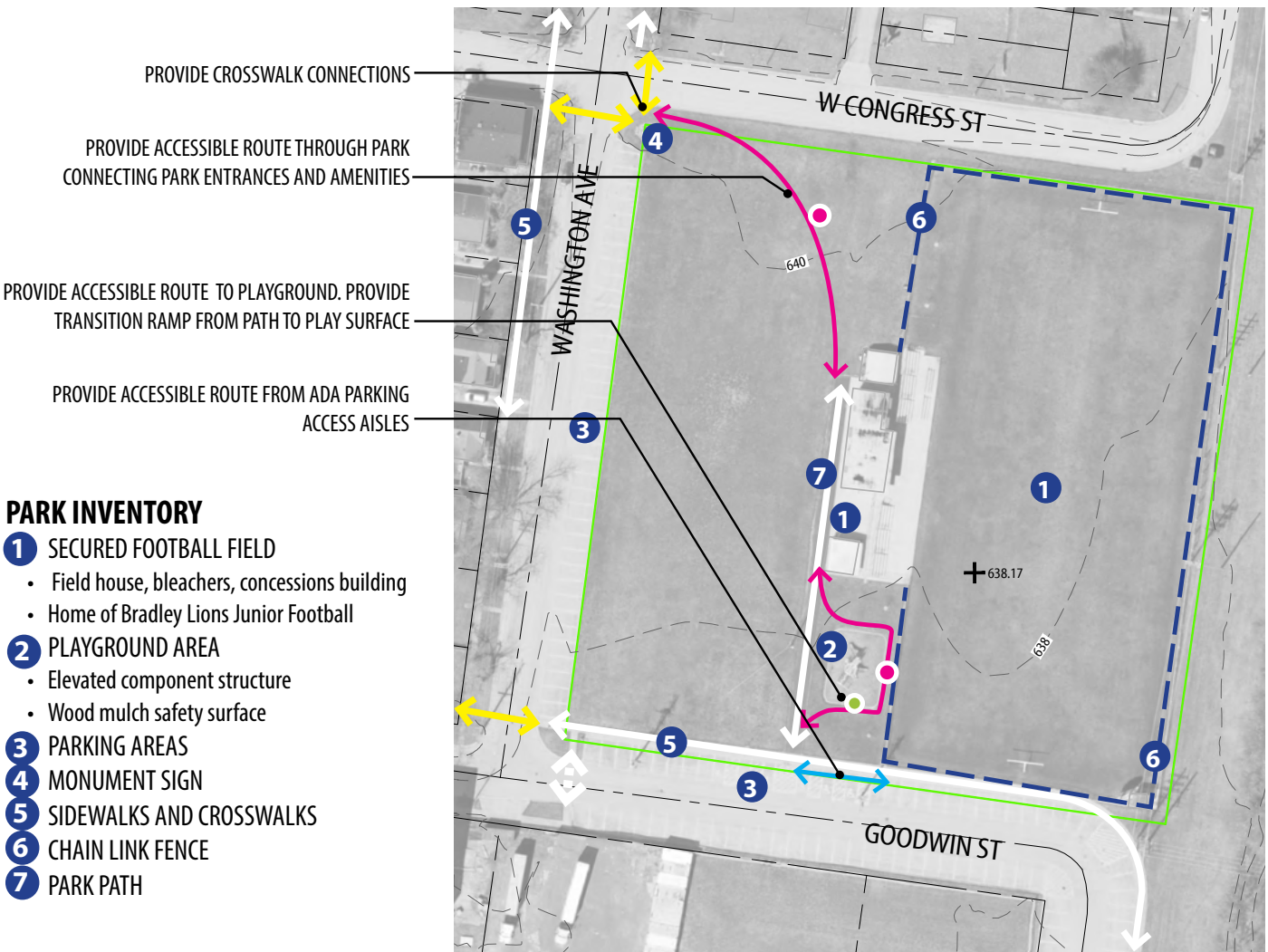
GUIDE NOTE: All Recommendations listed under the triangle bullets (▶) are included in Part 3 Cost Estimates.

16 RUDY'S MEMORIAL PARK

200 S. Washington Ave.

PARK DESCRIPTION

(3.7) Acre park with open lawn, playground and football field, home of Bradley Lions Junior Football.



PARK INVENTORY

- 1 SECURED FOOTBALL FIELD**
 - Field house, bleachers, concessions building
 - Home of Bradley Lions Junior Football
- 2 PLAYGROUND AREA**
 - Elevated component structure
 - Wood mulch safety surface
- 3 PARKING AREAS**
- 4 MONUMENT SIGN**
- 5 SIDEWALKS AND CROSSWALKS**
- 6 CHAIN LINK FENCE**
- 7 PARK PATH**

RECOMMENDATIONS LEGEND:

- PLAY SURFACE TRANSITION RAMP
- SEATING ALONG ACCESSIBLE PATH
- ↗ ACCESSIBLE ROUTE
- ↔ PROVIDE CROSSWALK



Elevated play component structure



Crosswalks are not IDOT compliant



ADA parking does not meet code.



Elevated play component structure



Transfer platform height meets code at approx. 17", is within the 11-18" acceptable range



Crosswalks not provided across Washington Ave

Assessment and Notes:

Park:

- Signage: Proper signage is not posted for the blind.
 - ▶ Recommendation: provide braille signage.
- Park Access: Park has limited access to neighborhood pedestrian network. Provide crosswalk and sidewalk connections at corners of Congress and Washington and Goodwin and Washington.
 - ▶ Recommendation: Connect sidewalks with park amenities with an accessible route.
- Parking: On-street perpendicular parking is available, including accessible parking. However, the signage and connections to the accessible parking spaces do not meet ADA requirements.
 - ▶ Recommendation: Provide each accessible stall with individual ground-mounted vertical signs. Provide each access aisle with a curb ramp connection to the park accessible route, per IDOT standards.

- Seating: No accessible seating available outside of the con-

GUIDE NOTE: All Recommendations listed under the triangle bullets (▶) are included in Part 3 Cost Estimates.

trolled football arena.

- ▶ Recommendation: provide accessible park benches in the open park area.

Playground:

- Playground does not provide any ground level accessible play components.
- Wood fiber mulch is compacted and deteriorated, with weeds growing in the play surface. Ensure playground safety surfaces are maintained to safety and accessibility requirements
- Playground Access: no accessible route to enter play area.
 - ▶ Recommendation: Provide accessible route connection to playground and transition curb from path to wood mulch play surface.

PART 2: ELEMENTS

ACCESSIBLE ON-STREET PARKING:

On-street parking is available at most parks in Bradley. Where on-street parking is provided there should also be accessible on-street parking. Accessible on-street parking shall meet IDOT standards (Bureau of Design and Environment Manual- Chapter 58).



EXAMPLE OF ACCESSIBLE ON-STREET PARKING

10 MINUTE WALK TO PARKS

In order to provide universal access to parks it is necessary to ensure that the pedestrian route to the park is ADA accessible. Safe routes for a 10 minute walk radius for each park should be provided with side-walks and accessible curb ramps at intersections. Curb ramps should meet current IDOT standards.



EXAMPLE OF CURB RAMP THAT MEETS CURRENT IDOT STANDARDS. NEAR FRANKLIN PARK



EXAMPLE OF CURB RAMP THAT DOES NOT MEET CURRENT STANDARDS, AT CAP ESTATES PARK

ACCESSIBLE PICNIC TABLE:

Any park that has picnic tables should also provide ADA compliant tables for wheel chair users. Picnic shelters should have at least 1 accessible picnic table. Parks with individual picnic tables should provide at least 1 accessible picnic table on a concrete pad with an accessible route connection to a main park access point.

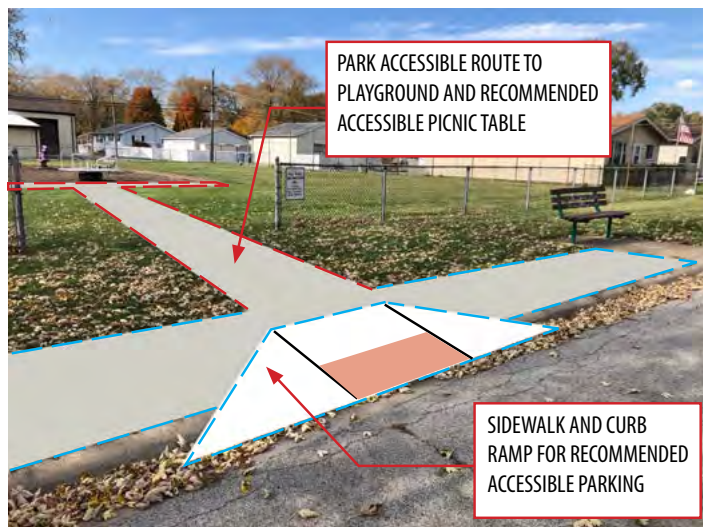


EXAMPLES OF DIFFERENT ADA COMPLIANT PICNIC TABLES.

ACCESSIBLE ROUTE:

All public facilities should be ADA accessible. Within parks it is important to provide accessible access to key features such as playgrounds and picnic shelters. Some requirements of an accessible route:

- Accessible ground surfaces must be stable, firm, and slip resistant. Hardened materials such as concrete and asphalt are sufficiently firm and stable for accessibility. (ADA Ch. 3)
- Maximum allowed vertical level change is 1/4" (otherwise requires bevel/ ramp)
- Maximum running slope is 5% (1:20)
- Maximum cross slope is 2% (1:48)
- Recommended width is 5'



CONCEPTUAL ILLUSTRATION- ACCESSIBLE ROUTE, GLENN PARK

PLAYGROUND TRANSITION RAMP:

All park playgrounds in Bradley should provide a transition ramp from the accessible path to the play surface.



CONSTRUCTION PHOTO SHOWING A CONCRETE TRANSITION RAMP BEFORE THE SAFETY SURFACE HAS BEEN INSTALLED.

BRADLEY PARKS ASSESSMENT PLAN

DINOSAUR SPRING ROCKER:

Several park playgrounds in Bradly feature a purple dinosaur spring rocker. In most cases it appears that these play elements have been installed improperly. The concrete footings are exposed above the play surfacing. In addition, the footings encroach the use zone, creating a safety hazard. The following are some recommendations and safety guidelines:

- Top of footing should not encroach the use zone, or else it should set below the full depth of required safety surfacing. Footing should not be exposed above surfacing.
- Fall height for spring rockers is determined by the highest part of the component, in this case the head of the dinosaur.
- Seat of rocker should be between 14 and 28" above top of safety surface level.
- RECOMMENDATION: Reinstall dinosaur spring rockers on new concrete footings that meet safety criteria
- Spring Rockers are generally intended for the preschool age group.
- RECOMMENDATION: Provide proper signage indicating restrictions and safety precautions

These recommendations apply to apply to all dinosaur spring rockers in Bradley parks.

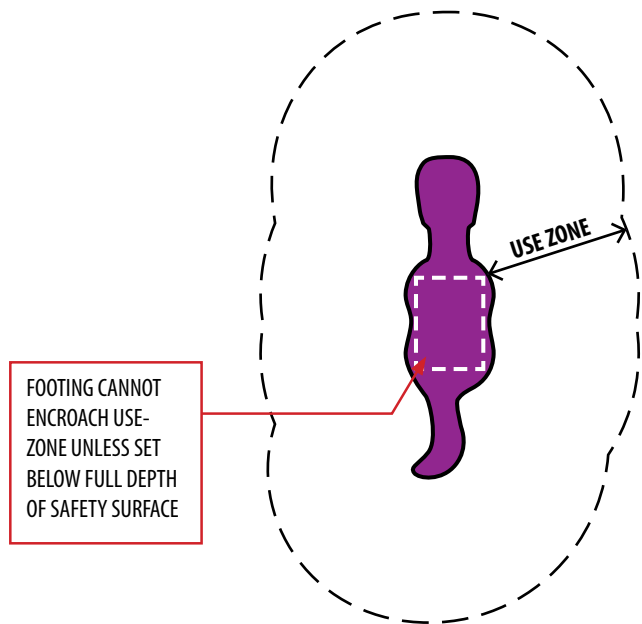


GLENN'S PARK

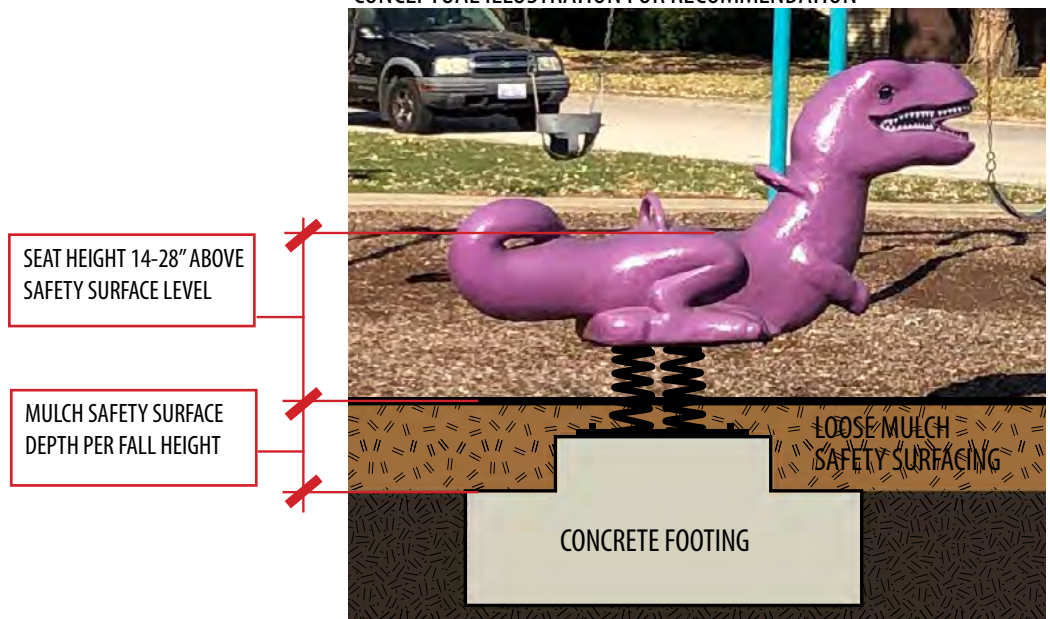


PONIKVAR PARK

ILLUSTRATIVE PLAN (NOT TO SCALE)



CONCEPTUAL ILLUSTRATION FOR RECOMMENDATION



JEANETTE PARK

MERRY-GO-ROUNDS:

Several park playgrounds in Bradley have merry-go-rounds. While very popular play components, Merry-go-round spinners can be dangerous if installations do not meet recommended safety guidelines, including the following:

- Merry-go-rounds should not be used on playgrounds intended for toddlers (under 2 years).
- Merry-go-rounds may present a physical hazard to pre-school-age children, this age group should always be supervised when using merry-go-rounds.
- RECOMMENDATION: Provide proper signage indicating age restrictions and safety precautions.
- Maximum allowable clearance from underside of platform to level of safety surfacing: 9 inches
- Max height top of platform from surface:
 - preschool 14"
 - school age: 18"
- A means should be provided to limit the peripheral speed of rotation to a maximum 13 ft/sec
- RECOMMENDATIONS:
 - Opt A. Consider removing existing merry-go-rounds and replacing with alternative spinning events that meet current code and safety recommendations.
 - Opt B. Retrofit existing merry-go-rounds to ensure speed limit maximum. Create a unitary play surface mound with poured-in-place rubber around base of structure to meet clearance and height requirements

These recommendations apply to all merry-go-rounds in Bradley parks.

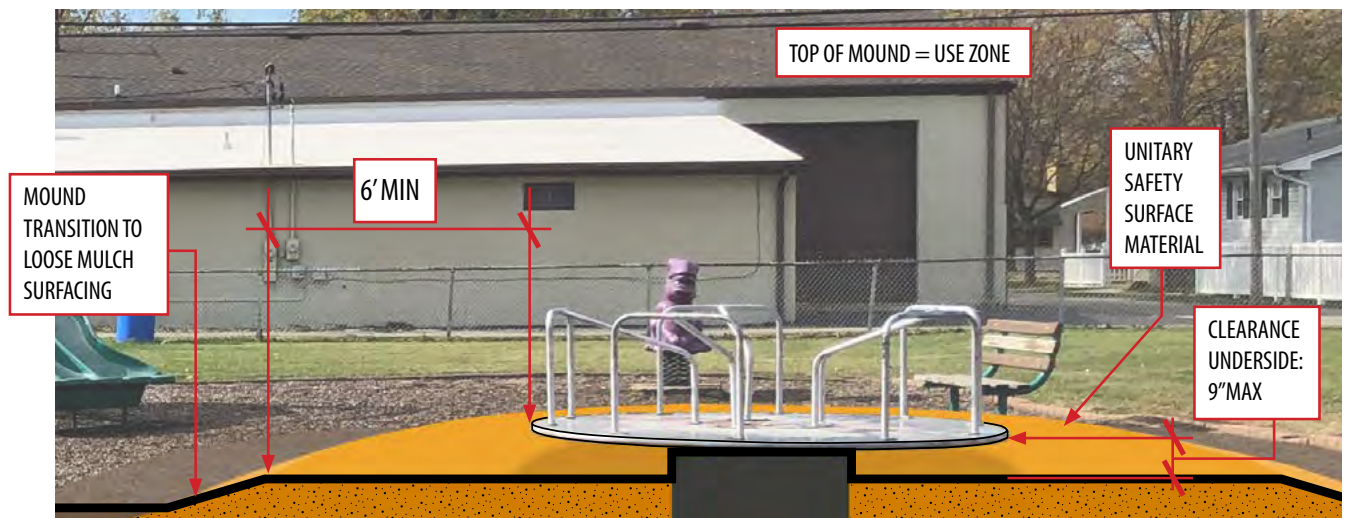


FRANKLIN PARK PLAYGROUND



GLENN'S PARK PLAYGROUND

CONCEPTUAL ILLUSTRATION, RECOMMENDATION OPTION B:



PART 3: COST ESTIMATES

The ADA Accessible Play Area Guidelines apply to all newly designed or constructed play areas. The guidelines also apply when alterations are made to existing play areas. These cost estimates for accessibility improvements are meant as a guide to aid future planning and budgeting for reconstruction projects.

Design and engineering documentation are recommended for Park and Play Area improvements.



Helgeson Memorial Park

ITEM DESCRIPTION	UNIT	UNIT PRICE	1		2		3		4	
			QTY	COST	QTY	COST	QTY	COST	QTY	COST
ACCESSIBLE WALKS (5' WD)	LINEAR FEET (LF)	\$ 65.00	-	\$ -	17	\$ 1,105.00	27	\$ 1,755.00	153	\$ 9,945.00
ACCESSIBLE PARKING SPOT (ROADWAY PAINT, CURB, SIGNAGE, CURB RAMP)	LUMP SUM	\$ 8,400.00	1	\$ 8,400.00	-	\$ -	-	\$ -	1	\$ 8,400.00
ADA PARKING SIGN (AT EXISTING PARKING)	EACH	\$ 100.00	-	\$ -	-	\$ -	-	\$ -	-	\$ -
ACCESSIBLE PICNIC TABLE (AT EXISTING SHELTER)	EACH	\$ 3,500.00	-	\$ -	1	\$ 3,500.00	-	\$ -	-	\$ -
ACCESSIBLE PICNIC AREA (TABLE, NEW CONCRETE PAD)	LUMP SUM	\$ 7,765.00	1	\$ 7,765.00	-	\$ -	1	\$ 7,765.00	1	\$ 7,765.00
ACCESSIBLE PARK BENCH	EACH	\$ 2,000.00	4	\$ 8,000.00	-	\$ -	1	\$ 2,000.00	2	\$ 4,000.00
PLAYGROUND SAFETY SURFACE TRANSITION (CONCRET RAMP)	EACH	\$ 1,500.00	1	\$ 1,500.00	1	\$ 1,500.00	1	\$ 1,500.00	1	\$ 1,500.00
REPLACE PLAYGROUND EQUIPMENT [SEE NOTE]	ALLOWANCE	VARIES	1	\$ 20,750.00	-	\$ -	1	\$ 21,500.00	1	\$ 21,500.00
PLAY EQUIPMENT REMOVAL [SEE NOTE]	ALLOWANCE	VARIES	-	\$ -	-	\$ -	-	\$ -	-	\$ -
DINOSAUR ROCKER - REINSTALL WITH NEW FOOTING	EACH	\$ 1,300.00	-	\$ -	-	\$ -	-	\$ -	1	\$ 1,300.00
BRAILE PARK SIGNAGE	EACH	\$ 300.00	1	\$ 300.00	1	\$ 300.00	1	\$ 300.00	1	\$ 300.00
SUBTOTAL				\$ 46,715.00		\$ 6,405.00		\$ 34,820.00		\$ 54,710.00
NOTES:			Remove black and white play structure. Replace with ground level play features				Replace Merry-Go-Round		Replace Merry-Go-Round	

ITEM DESCRIPTION	UNIT	UNIT PRICE	5		6		7		8	
			QTY	COST	QTY	COST	QTY	COST	QTY	COST
ACCESSIBLE WALKS (5' WD)	LINEAR FEET (LF)	\$ 65.00	37	\$ 2,405.00	-	\$ -	-	\$ -	-	\$ -
ACCESSIBLE PARKING SPOT (ROADWAY PAINT, CURB, SIGNAGE, CURB RAMP)	LUMP SUM	\$ 8,400.00	1	\$ 8,400.00	-	\$ -	-	\$ -	1	\$ 8,400.00
ADA PARKING SIGN (AT EXISTING PARKING)	EACH	\$ 100.00	-	\$ -	-	\$ -	-	\$ -	-	\$ -
ACCESSIBLE PICNIC TABLE (AT EXISTING SHELTER)	EACH	\$ 3,500.00	-	\$ -	-	\$ -	-	\$ -	-	\$ -
ACCESSIBLE PICNIC AREA (TABLE, NEW CONCRETE PAD)	LUMP SUM	\$ 7,765.00	-	\$ -	-	\$ -	-	\$ -	-	\$ -
ACCESSIBLE PARK BENCH	EACH	\$ 2,000.00	1	\$ 2,000.00	-	\$ -	-	\$ -	-	\$ -
PLAYGROUND SAFETY SURFACE TRANSITION (CONCRET RAMP)	EACH	\$ 1,500.00	1	\$ 1,500.00	1	\$ 1,500.00	-	\$ -	-	\$ -
REPLACE PLAYGROUND EQUIPMENT [SEE NOTE]	ALLOWANCE	VARIES	-	\$ -	1	\$ 21,500.00	-	\$ -	-	\$ -
PLAY EQUIPMENT REMOVAL [SEE NOTE]	ALLOWANCE	VARIES	-	\$ -	-	\$ -	1	\$ 2,000.00	-	\$ -
DINOSAUR ROCKER - REINSTALL WITH NEW FOOTING	EACH	\$ 1,300.00	-	\$ -	1	\$ 1,300.00	-	\$ -	-	\$ -
BRAILE PARK SIGNAGE	EACH	\$ 300.00	1	\$ 300.00	1	\$ 300.00	1	\$ 300.00	1	\$ 300.00
SUBTOTAL				\$ 14,605.00		\$ 24,600.00		\$ 2,300.00		\$ 8,700.00
NOTES:			Existing switch-back path is not accessible. Replacement not included in this cost estimate. Engineering required to determine feasibility and costs.		Replace Merry-Go-Round		Remove Swings			

ITEM DESCRIPTION	UNIT	UNIT PRICE	9		10		11		12	
			QTY	COST	QTY	COST	QTY	COST	QTY	COST
ACCESSIBLE WALKS (5' WD)	LINEAR FEET (LF)	\$ 65.00	1,211	\$ 78,715.00	1,058	\$ 68,770.00	301	\$ 19,565.00	-	\$ -
ACCESSIBLE PARKING SPOT (ROADWAY PAINT, CURB, SIGNAGE, CURB RAMP)	LUMP SUM	\$ 8,400.00	-	\$ -	-	\$ -	-	\$ -	-	\$ -
ADA PARKING SIGN (AT EXISTING PARKING)	EACH	\$ 100.00	4	\$ 400.00	-	\$ -	-	\$ -	-	\$ -
ACCESSIBLE PICNIC TABLE (AT EXISTING SHELTER)	EACH	\$ 3,500.00	-	\$ -	-	\$ -	-	\$ -	-	\$ -
ACCESSIBLE PICNIC AREA (TABLE, NEW CONCRETE PAD)	LUMP SUM	\$ 7,765.00	1	\$ 7,765.00	-	\$ -	-	\$ -	-	\$ -
ACCESSIBLE PARK BENCH	EACH	\$ 2,000.00	-	\$ -	2	\$ 4,000.00	2	\$ 4,000.00	-	\$ -
PLAYGROUND SAFETY SURFACE TRANSITION (CONCRET RAMP)	EACH	\$ 1,500.00	1	\$ 1,500.00	-	\$ -	1	\$ 1,500.00	-	\$ -
REPLACE PLAYGROUND EQUIPMENT [SEE NOTE]	ALLOWANCE	VARIABLES	-	\$ -	-	\$ -	-	\$ -	-	\$ -
PLAY EQUIPMENT REMOVAL [SEE NOTE]	ALLOWANCE	VARIABLES	-	\$ -	-	\$ -	-	\$ -	1	\$ 8,000.00
DINOSAUR ROCKER - REINSTALL WITH NEW FOOTING	EACH	\$ 1,300.00	-	\$ -	-	\$ -	-	\$ -	-	\$ -
BRAILE PARK SIGNAGE	EACH	\$ 300.00	1	\$ 300.00	1	\$ 300.00	1	\$ 300.00	-	\$ -
SUBTOTAL				\$ 88,680.00		\$ 73,070.00		\$ 25,365.00		\$ 8,000.00
NOTES:									Temporary: Remove play equipment, regrade soil and seed lawn. Long term: redesign park	

ITEM DESCRIPTION	UNIT	UNIT PRICE	13		14		15		16	
			QTY	COST	QTY	COST	QTY	COST	QTY	COST
ACCESSIBLE WALKS (5' WD)	LINEAR FEET (LF)	\$ 65.00	166	\$ 10,790.00	-	\$ -	735	\$ 47,775.00	375	\$ 24,375.00
ACCESSIBLE PARKING SPOT (ROADWAY PAINT, CURB, SIGNAGE, CURB RAMP)	LUMP SUM	\$ 8,400.00	1	\$ 8,400.00	1	\$ 8,400.00	-	\$ -	-	\$ -
ADA PARKING SIGN (AT EXISTING PARKING)	EACH	\$ 100.00	-	\$ -	-	\$ -	3	\$ 300.00	6	\$ 600.00
ACCESSIBLE PICNIC TABLE (AT EXISTING SHELTER)	EACH	\$ 3,500.00	1	\$ 3,500.00	-	\$ -	-	\$ -	-	\$ -
ACCESSIBLE PICNIC AREA (TABLE, NEW CONCRETE PAD)	LUMP SUM	\$ 7,765.00	-	\$ -	1	\$ 7,765.00	1	\$ 7,765.00	-	\$ -
ACCESSIBLE PARK BENCH	EACH	\$ 2,000.00	-	\$ -	-	\$ -	-	\$ -	2	\$ 4,000.00
PLAYGROUND SAFETY SURFACE TRANSITION (CONCRET RAMP)	EACH	\$ 1,500.00	1	\$ 1,500.00	1	\$ 1,500.00	-	\$ -	1	\$ 1,500.00
REPLACE PLAYGROUND EQUIPMENT [SEE NOTE]	ALLOWANCE	VARIABLES	-	\$ -	-	\$ -	-	\$ -	-	\$ -
PLAY EQUIPMENT REMOVAL [SEE NOTE]	ALLOWANCE	VARIABLES	-	\$ -	-	\$ -	-	\$ -	-	\$ -
DINOSAUR ROCKER - REINSTALL WITH NEW FOOTING	EACH	\$ 1,300.00	1	\$ 1,300.00	-	\$ -	-	\$ -	-	\$ -
BRAILE PARK SIGNAGE	EACH	\$ 300.00	1	\$ 300.00	1	\$ 300.00	1	\$ 300.00	1	\$ 300.00
SUBTOTAL				\$ 25,790.00		\$ 17,965.00		\$ 56,140.00		\$ 30,775.00
NOTES:										

TOTAL VILLAGE PARKS

ITEM DESCRIPTION	UNIT	UNIT PRICE	TOTAL QTY	ITEM COST SUBTOTAL
ACCESSIBLE WALKS (5' WD)	LINEAR FEET (LF)	\$ 65.00	4,080	265,200
ACCESSIBLE PARKING SPOT (ROADWAY PAINT, CURB, SIGNAGE, CURB RAMP)	LUMP SUM	\$ 8,400.00	6	50,400
ADA PARKING SIGN (AT EXISTING PARKING)	EACH	\$ 100.00	13	1,300
ACCESSIBLE PICNIC TABLE (AT EXISTING SHELTER)	EACH	\$ 3,500.00	2	7,000
ACCESSIBLE PICNIC AREA (TABLE, NEW CONCRETE PAD)	LUMP SUM	\$ 7,765.00	6	46,590
ACCESSIBLE PARK BENCH	EACH	\$ 2,000.00	14	28,000
PLAYGROUND SAFETY SURFACE TRANSITION (CONCRET RAMP)	EACH	\$ 1,500.00	11	16,500
REPLACE PLAYGROUND EQUIPMENT [SEE NOTE]	ALLOWANCE	VARIABLES	4	85,250
PLAY EQUIPMENT REMOVAL [SEE NOTE]	ALLOWANCE	VARIABLES	2	10,000
DINOSAUR ROCKER - REINSTALL WITH NEW FOOTING	EACH	\$ 1,300.00	3	3,900
BRAILE PARK SIGNAGE	EACH	\$ 300.00	15	4,500
SUBTOTAL				\$ 518,640.00



Blatt Park

REFERENCES

- ❑ ADA Accessibility Guidelines for Buildings and Facilities (ADAAG) as published by the U.S. Architectural and Transportation Barriers Compliance Board.
 - ▶ Chapter 10- Accessibility Guidelines for Play Areas. <https://www.access-board.gov/ada/guides/chapter-10-play-areas/#a-summary-of-accessibility-guidelines-for-play-areas>
- ❑ Public Playground Safety Handbook, as published by the U.S. Consumer Product Safety Commission
 - ▶ <https://www.cpsc.gov/s3fs-public/325.pdf>
- ❑ Illinois Department of Transportation, Bureau of Local Roads and Streets Manual
 - ▶ <https://idot.illinois.gov/Assets/uploads/files/Doing-Business/Manuals-Guides-&-Handbooks/Highways/Local-Roads-and-Streets/Local%20Roads%20and%20Streets%20Manual.pdf>
- ❑ Illinois Department of Transportation, Bureau of Design and Environment Manual
 - ▶ <https://idot.illinois.gov/Assets/uploads/files/Doing-Business/Manuals-Guides-&-Handbooks/Highways/Design-and-Environment/Design%20and%20Environment%20Manual,%20Bureau%20of.pdf>